



# Design for Aging in Historic Spaces

Genevieve Frank, AIA LEED AP BD+C— ICON Architecture  
Alisa Augenstein—The Public Archaeology Laboratory, Inc.  
Wendy Cohen—New Seasons Development  
Bethany Moody AIA—ICON Architecture  
Ilene Vogel—Director North Shore CDC

Friday, October 28 | 3:00 PM—4:30 PM

# DESIGN FOR AGING IN [HISTORIC ]PLACES

THE INTERSECTION BETWEEN CHERISHED HISTORIC BUILDINGS  
& ACTIVE, ACCESSIBLE SENIOR COMMUNITIES



# LEARNING OBJECTIVES

1. Identify strategies to optimize existing and historic structures to support Senior Design Guidelines
2. Identify strategies to reconcile existing building constraints with accessibility and clearances
3. Identify historically sensitive opportunities for Universal Design
4. Identify the many ways existing buildings are a resource



# WHO WE ARE:



Moderator:  
**Genevieve Frank**  
**AIA LEED AP BD+C**  
*Project Architect*  
ICON Architecture



**Bethany Moody AIA**  
*Project Architect*  
ICON Architecture



**Alisa Augenstein**  
*Senior Architectural Historian*  
The Public Archaeology  
Laboratory, Inc.



**Wendy Cohen**  
*President*  
*Managing Member*  
New Seasons Development

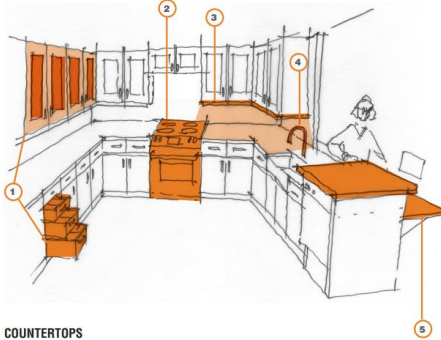


**Ilene Vogel**  
*Director of Real Estate*  
North Shore CDC

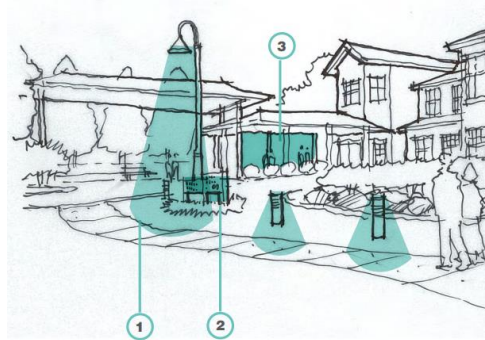
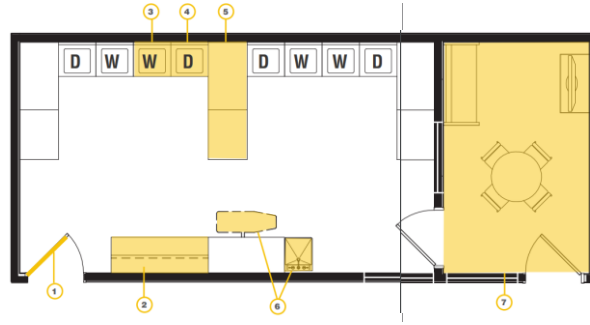


# AGING IN PLACE DESIGN GUIDELINES

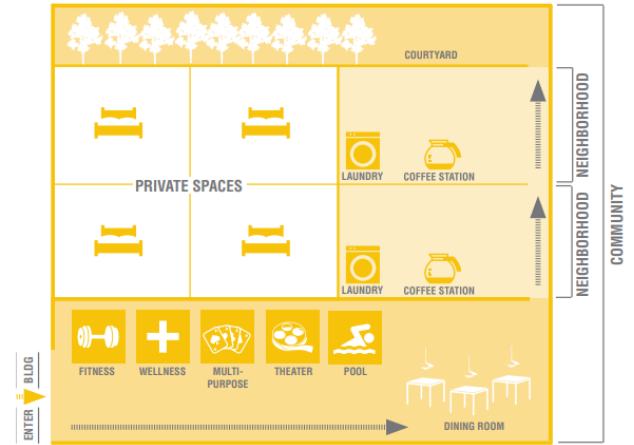
Published by ENTERPRISE GREEN COMMUNITIES



COUNTERTOPS



Placement of frequently used services on each floor, such as trash/recycling collection, laundry and coffee stations, will reduce travel distances and encourage residents to venture outside of their unit.



A residential building can be a microcosm of the surrounding community with its own internal neighborhoods and services.





Coady School Residences, Bourne, MA



St. James School, Salem, MA



Bigelow & Riverbend Schools, Athol, MA



Oxford School Residences, Fairhaven, MA





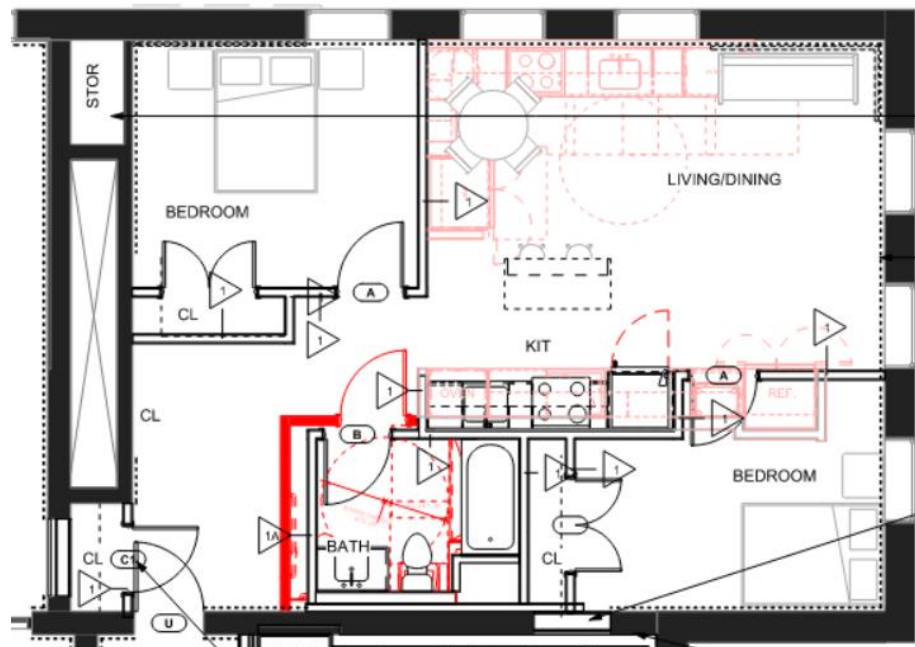
My Childhood home  
were I blossomed and  
met my friends for life

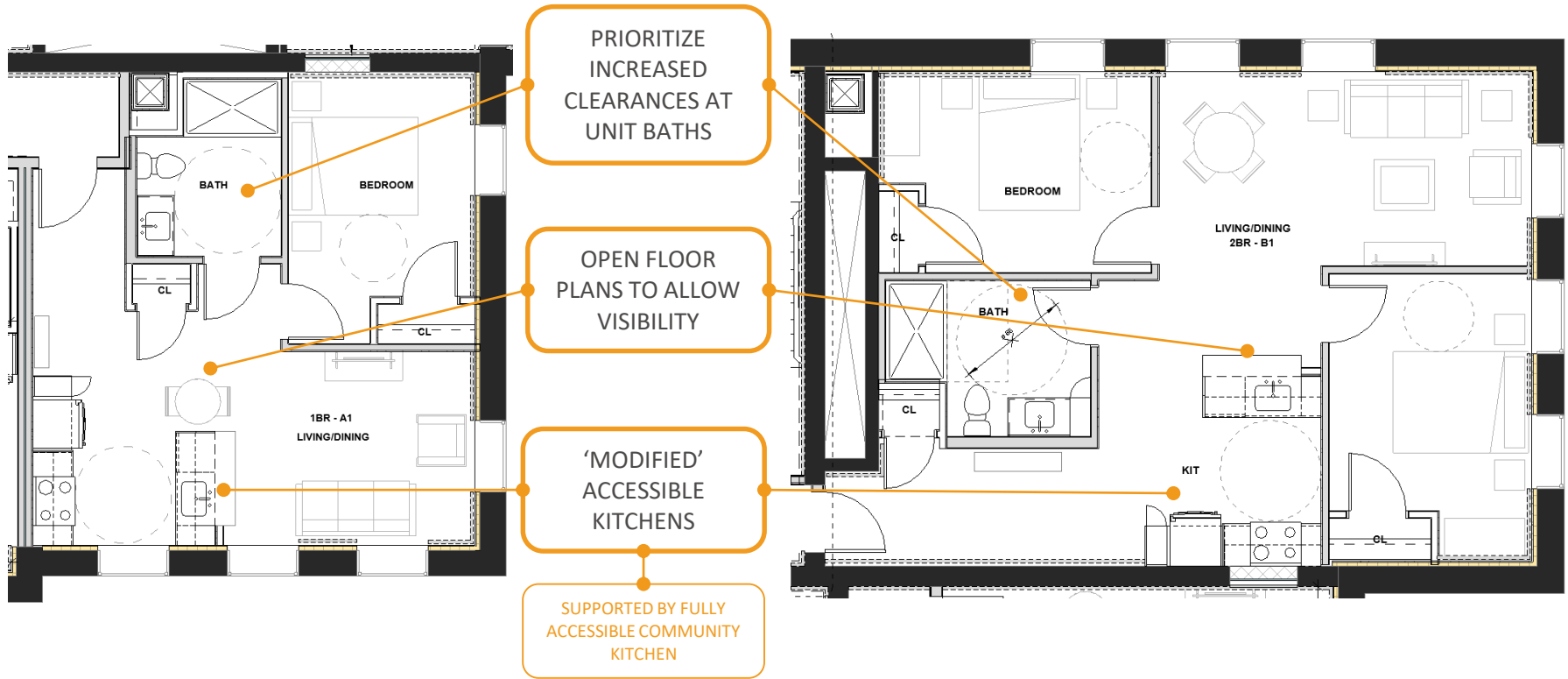
this school will always hold a special  
place in my heart

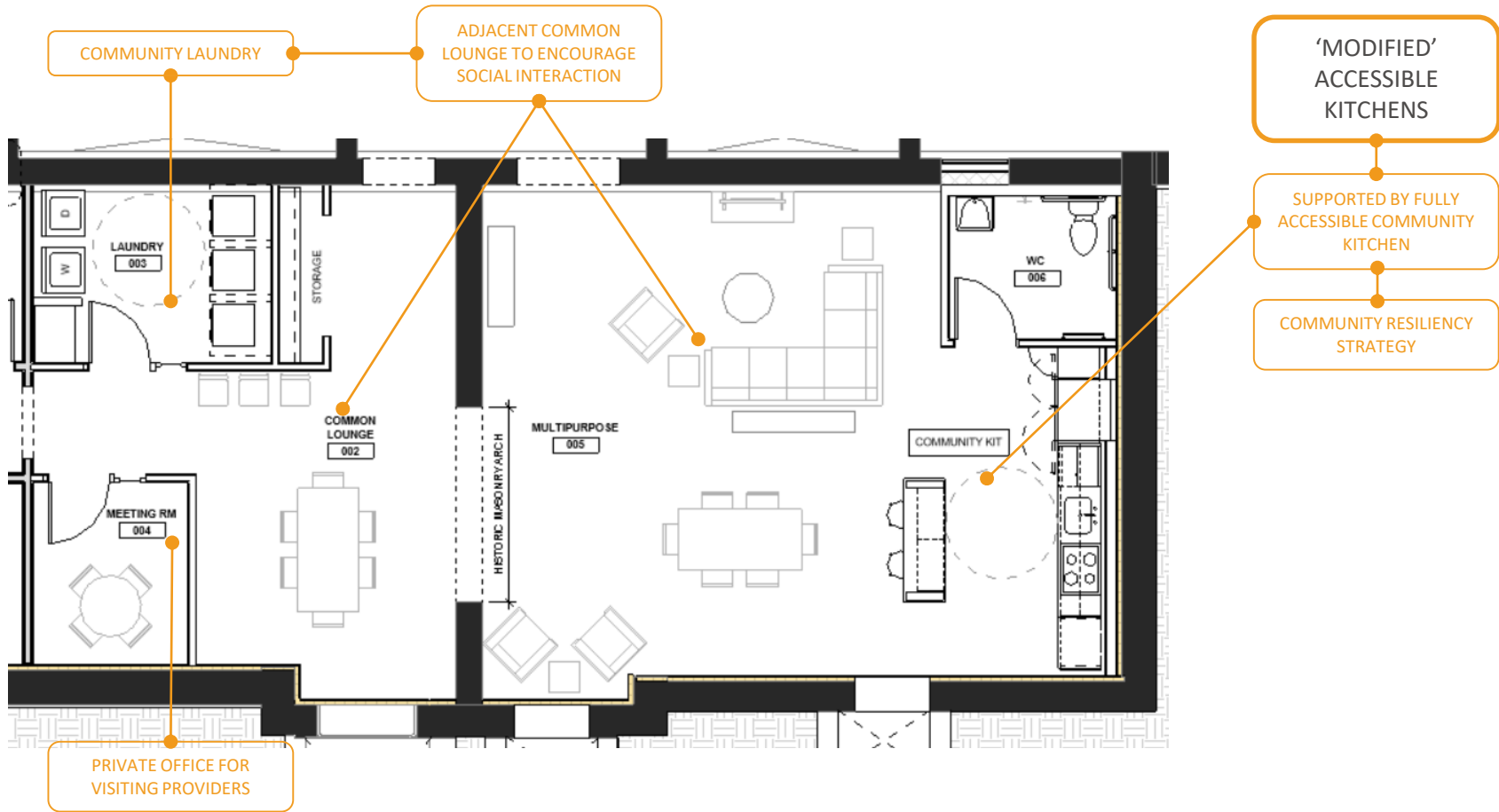


Willow  
+  
Deanna

## STUDYING THE IMPACT OF APPENDIX K ON UNIT LAYOUTS





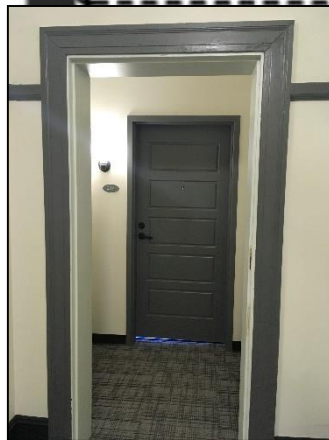
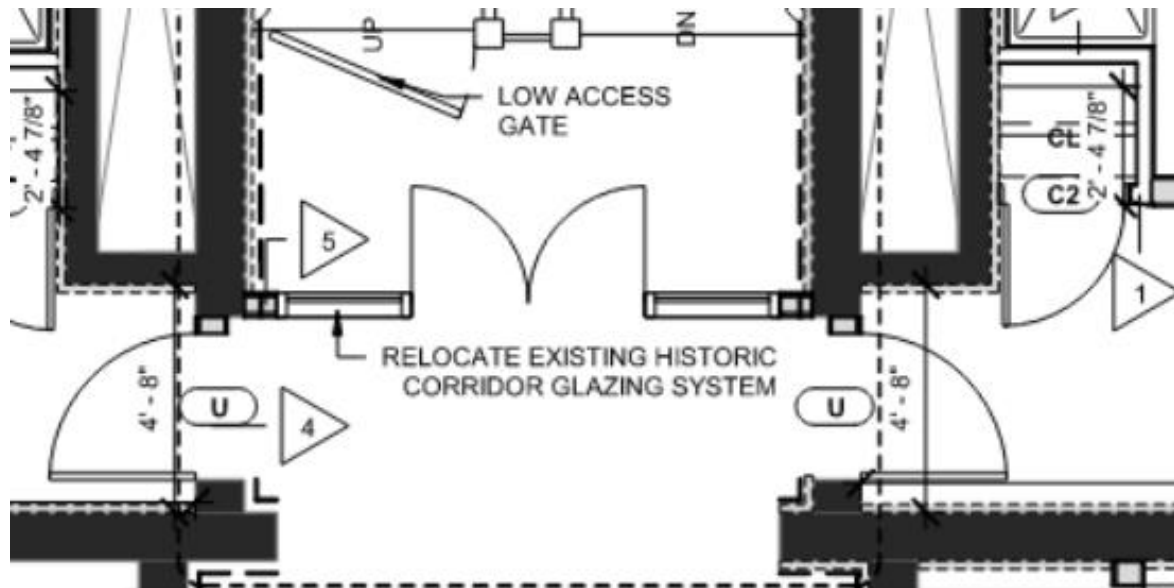
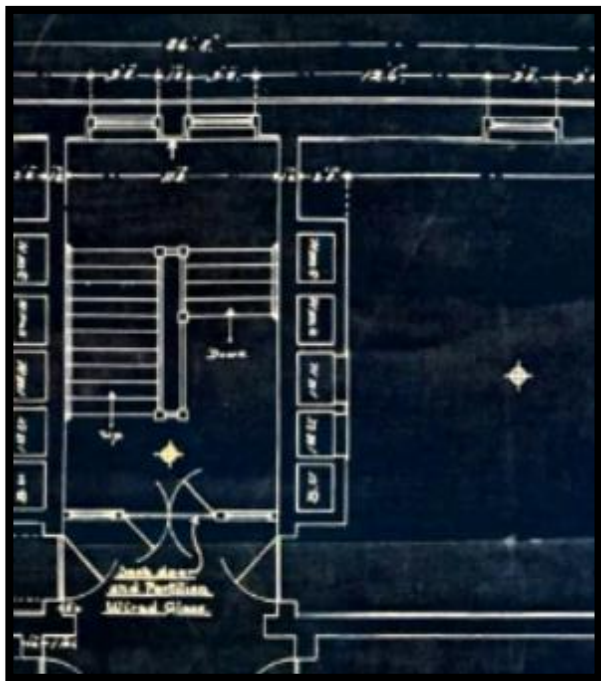




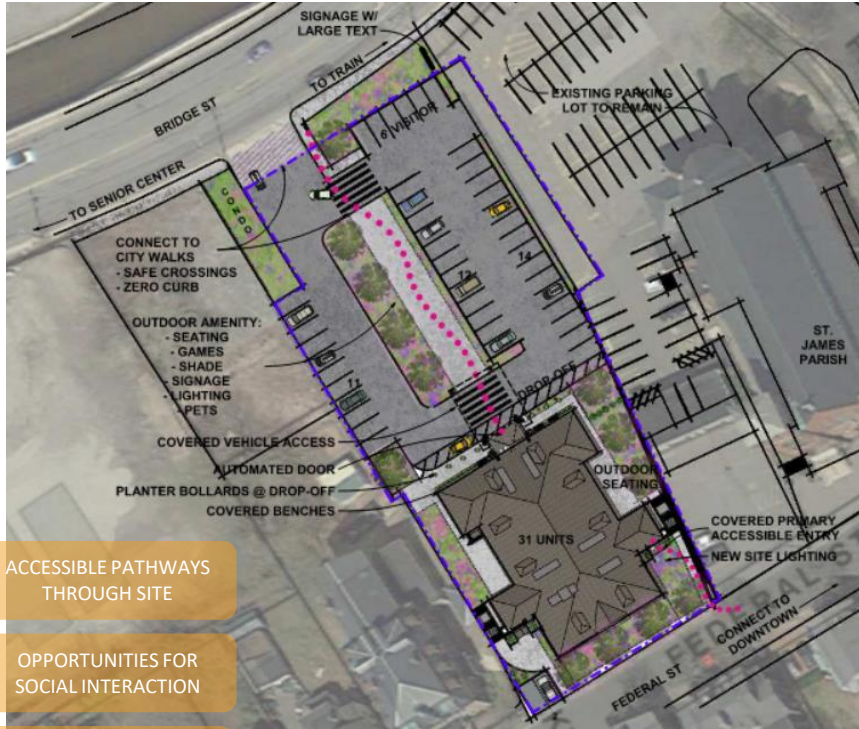
Oxford School Residences, Fairhaven, MA



AGING IN [HISTORIC] PLACES



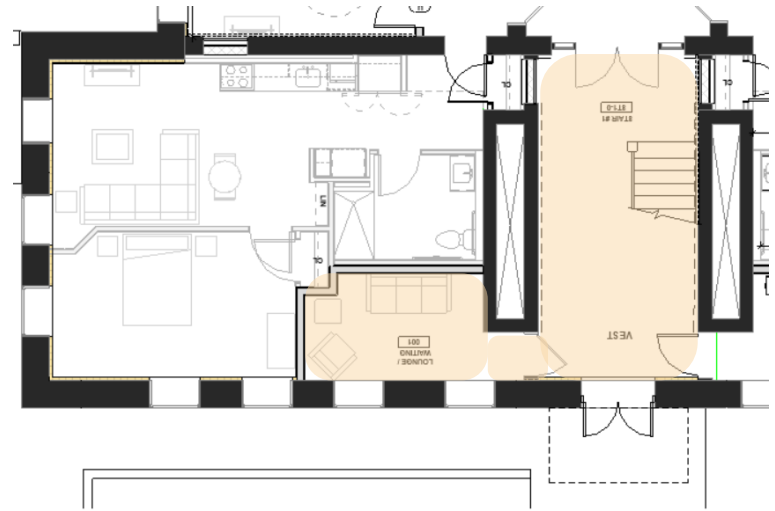
AGING IN [HISTORIC] PLACES



ACCESSIBLE PATHWAYS THROUGH SITE

OPPORTUNITIES FOR SOCIAL INTERACTION

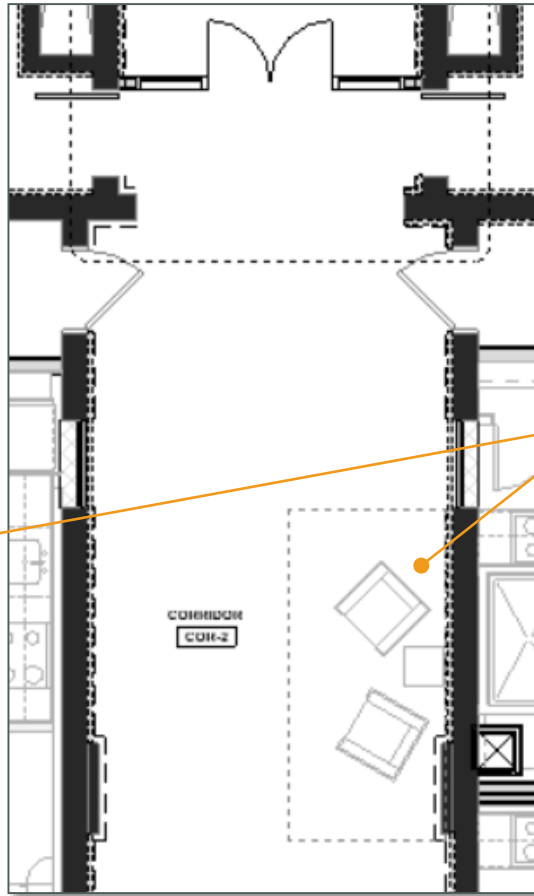
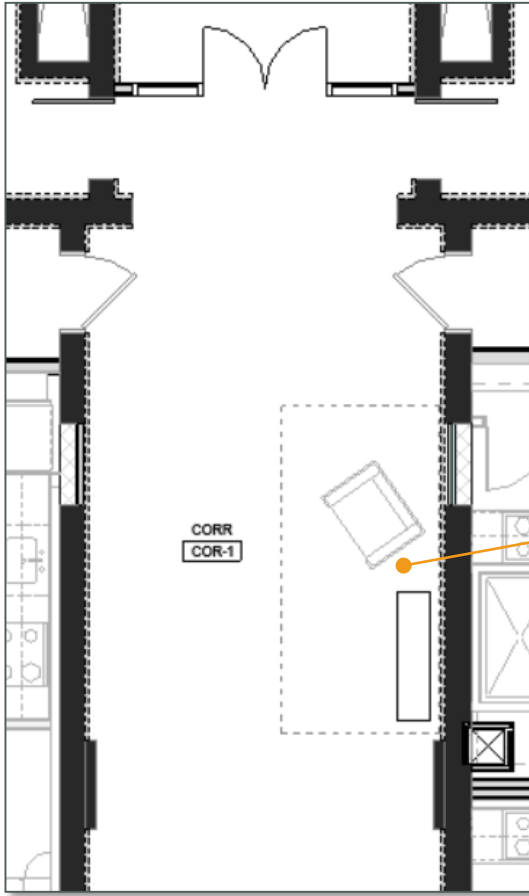
CONNECTIONS TO NEIGHBORHOOD RESOURCES



# AGING IN [HISTORIC] PLACES



Oxford School Residences, Fairhaven, MA



AMENITIES ON EACH FLOOR TO ENCOURAGE SOCIAL INTERACTION

CENTRALLY LOCATED, HIGHLY VISIBLE

OPPORTUNITIES FOR FOUND SPACES IN EXISTING BUILDINGS!





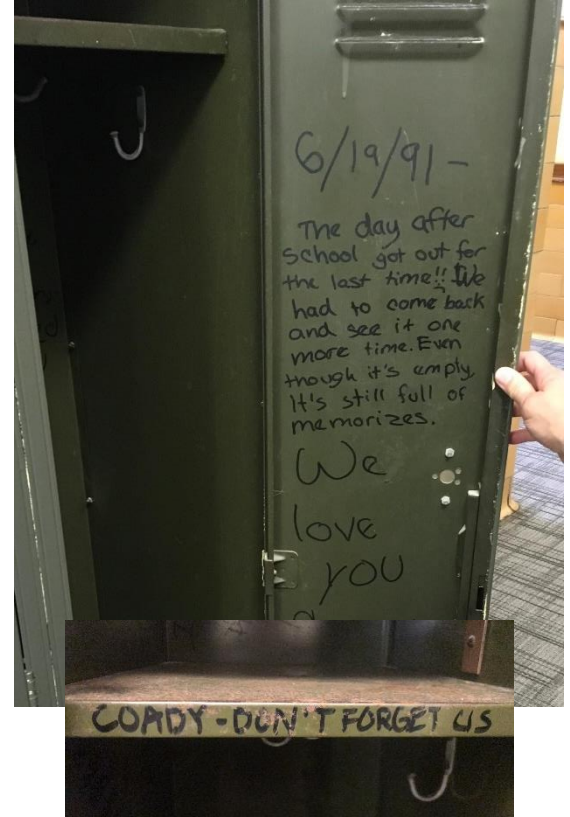
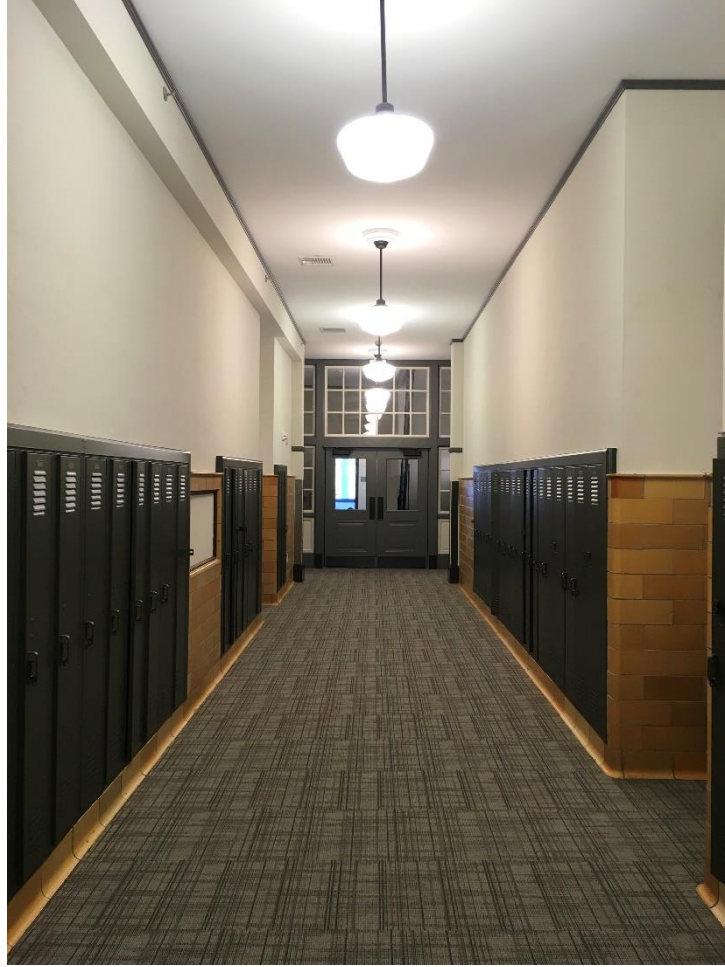
Coady School Residences, Bourne, MA



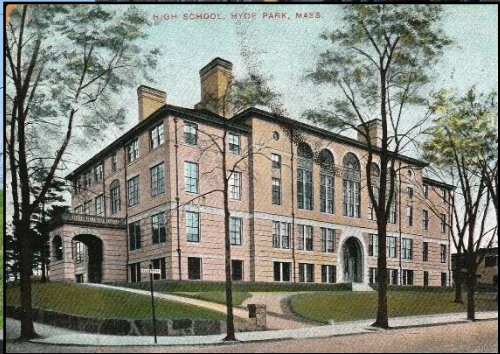
AGING IN [HISTORIC] PLACES



Coady School Residences, Bourne, MA

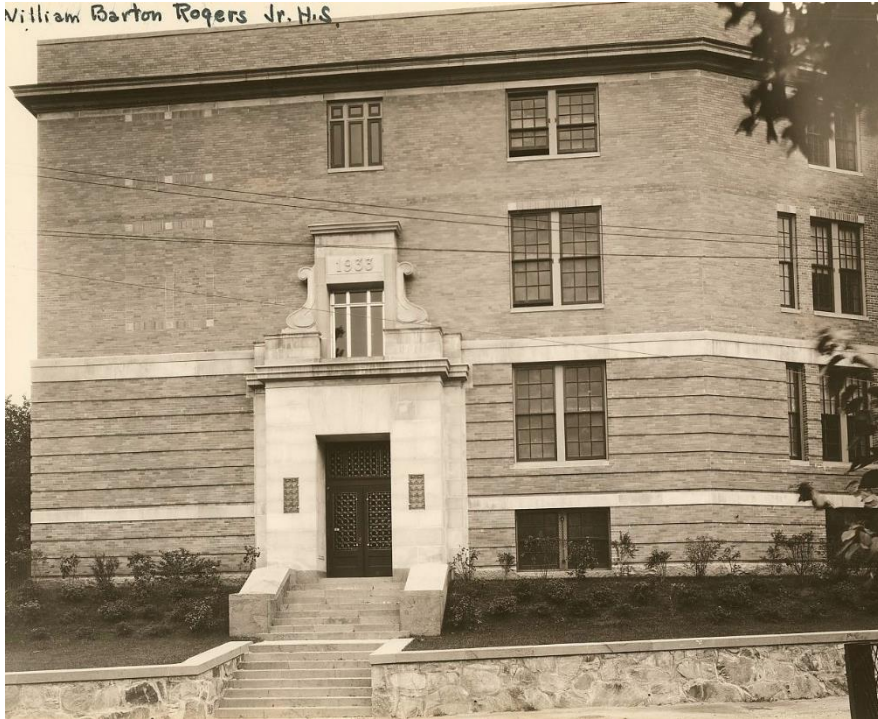


AGING IN [HISTORIC] PLACES



William Barton Rogers School, Hyde Park

William Barton Rogers Jr. H.S.



AGING IN [HISTORIC] PLACES



Dracut Centre School



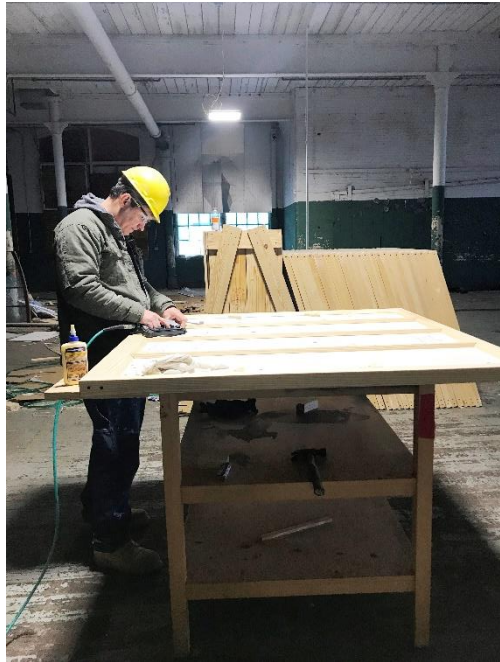
AGING IN [HISTORIC] PLACES



PAC 10, Lawrence, MA



AGING IN [HISTORIC] PLACES



AGING IN [HISTORIC] PLACES



**A SYMPOSIUM ON  
INTERSECTIONAL  
AND  
PARTICIPATORY  
DESIGN  
PROCESSES**

*Hosted by  
BSA Women in  
Design in  
collaboration with  
the Design for  
Aging Committee,  
Access  
Committee, and  
the BSLA*

**INTERSECTIONS:**

MOBILITY, EQUITY, AND THE BUILT ENVIRONMENT

OCTOBER



28-29

# A SYMPOSIUM BY



# IN PARTNERSHIP WITH

## **ACCESS COMMITTEE**

## **DESIGN FOR AGING COMMITTEE**



## GOLD

SASAKI



## SILVER

Perkins&Will

DIMELLA  
SHAFFER



## BRONZE

FINE GOLD  
ALEXANDER  
ARCHITECTS

landscapeforms®

## SUPPORTER

utile