

Keynote Panel

Lily Linke—Citizens' Housing and Planning Association (Moderator)

James Yasou Mansfield—MASS Design

Patricia Mendez AIA LEED AP, BD+C—Mayor's Commission for Persons with Disabilities

Allentza Michel—Powerful Pathways

Friday, October 28 | 8:45 AM - 10:15 AM



Lily Linke *Moderator*
**Municipal Engagement Program Associate, Citizens'
Housing and Planning Association**

Lily Linke is an artist, educator, planner, and community organizer. After working as a performer and arts educator, she received her Masters in Urban and Environmental Policy and Planning from Tufts University. She developed her Master's thesis on the intersection of walkability and race into a five episode podcast, Foot Notes. Lily currently works for the Citizens' Housing and Planning Association (CHAPA) in their Municipal Engagement Initiative. In this role, she supports the creation of affordable housing coalitions in communities across the state. Lily believes strongly in the power of storytelling to create a better world, because if we can't imagine it, how can we build it?



Jeffrey Yasuo Mansfield
Principal, MASS Design Group,
Director, Deaf Space and Disability
Justice Lab



**Patricia Mendez AIA, LEED AP
BD+C**
Director, Architectural Access,
Mayor's Commission for Persons
with Disabilities



Allentza Michel
Program Director & Visiting
Practitioner, Tufts / Founder,
Principal & Creative Director,
Powerful Pathways



INTERSECTIONS:
MOBILITY, EQUITY, AND THE BUILT ENVIRONMENT



Patricia Mendez AIA, LEED AP BD+C Director of Architectural Access, the Mayor's Commission for Persons with Disabilities

Patricia Mendez is the Director of Architectural Access for the Mayor's Commission for Persons with Disabilities. In this role, she oversees accessibility and compliance of the built environment throughout the City of Boston. She provides technical assistance and code review for all new development in Boston, working closely with property owners, architects, consultants, and municipal agencies. Patricia currently serves as the vice-chair of the Massachusetts Architectural Access Board, and participates in ongoing City initiatives.

DISABILITIES COMMISSION



October 28, 2022

October 28, 2022

Patricia Mendez, AIA, LEED BD +C

Director of Architectural Access

patricia.mendez@boston.gov

October 28, 2022

City of Boston
Mayor's Commission for Persons with Disabilities
(or Disabilities Commission)

Boston City Hall

One City Hall Square, Room 967

Boston, MA 02201

Website: boston.gov/disability

Email: disability@boston.gov

Phone: 617-635-3682 TTY: 617-635-2541

Our Mission

The Disabilities Commission aims to increase opportunities for people with disabilities by facilitating full and equal participation in all aspects of life within the City of Boston.

This includes reducing architectural, communication, procedural, and attitudinal barriers at the local government level, as well as facilitating access to civic activities, public rights of way, housing, education, employment, transportation, recreation, and more.

Our Department

The Disabilities Commission is a Department of the Human Services Cabinet in Boston City Hall with seven full time staff who work on:

- *Title II ADA Compliance*
- *Architectural Access Review*
- *Delivering Programs & Services*
- *Providing Information & Referral*
- *Doing Outreach & Engagement*
- *Working with our Advisory Board*

Our Work

The Disabilities Commission work focuses on *creating systemic access throughout the City of Boston* as a local government entity by collaborating with other City departments to ensure that all the work they do is ADA compliant and inclusive of people with disabilities.

We also work closely with other municipal agencies, private developers, businesses, and other external partners to ensure that accessibility and inclusion remain a top priority in all buildings and programs throughout the city of Boston.

Creating Systemic Accessibility In:

The Public Right of Way

Public Realm

Buildings and Facilities

Policies and Tools We've Implemented

- [BPDA Article 80 Accessibility Checklist](#)

- *Simple tool to ensure that accessibility is planned at the beginning of projects and continues throughout development rather than after design and construction are completed*
- *Ensures that projects not only meet minimum MAAB/ADA requirements, but that they create a built environment which provides equitable experiences for all people, regardless of age or ability.*

- Checklists & Self-Assessments

- *Meetings & Events Checklists - share with City departments and others upon request*
- *Partner agency self-assessments - google form with simplified ADA Accessibility Checklist*
- *We emphasize that we are here to be supportive partners, not to be the "ADA police!"*

- Places of Public Accommodation - ADA Title III

- *Non-governmental organizations and businesses - restaurants, stores, museums, theatres*
- *Not under our office's jurisdiction of ADA Title II - these are ADA Title III entities*
- *We send friendly, gentle reminders about responsibility to create and maintain accessibility*



ARCHITECTURAL DESIGN FOR PEOPLE OF ALL ABILITIES

CITY OF BOSTON

SMOOTH SIDEWALKS

How inclusive is this design? How safe does this design feel for people of all abilities?



- **Visual disabilities**
 - *unsafe*
 - *scary*
- **Mobility disabilities**
 - *barrier*
 - *dangerous*
 - *painful*



SMOOTH SIDEWALKS

How inclusive is this design? How safe does this design feel for people of all abilities?



SMOOTH SIDEWALKS

Is it smooth? Is it stable? Is it slip resistant?



SOCIAL STAIRS

How inclusive is this design? How safe does this design feel for people of all abilities?



Visual disabilities

- *confusing*
- *scary*

Mobility disabilities

- *inaccessible*
- *dangerous*



- Simple tool to ensure that accessibility is planned at the beginning of projects and continues throughout development – rather than after design and construction are completed
- Ensures that projects not only meet minimum state and federal requirements, but that they create a built environment which provides equitable experiences for all people, regardless of age or ability.

Article 80 | ACCESSIBILITY CHECKLIST – Updated October, 2019

Today's Date:		Your Name and Title:		
1. Project Information: <i>If this is a multi-phased or multi-building project, fill out a separate Checklist for each phase/building.</i>				
Project Name:				
Project Address(es):				
Total Number of Phases/Buildings:				
Primary Contact: <small>(Name / Title / Company / Email / Phone)</small>				
Owner / Developer:				
Architect:				
Civil Engineer:				
Landscape Architect:				
Code Consultant:				
Accessibility Consultant (If you have one):				
What stage is the project on the date this checklist is being filled out?	SPRA / PNF / Expanded PNF Submitted	Draft / Final Project Impact Report Submitted	BPDA Board Approved or other: _____	
2. Building Classification and Description: <i>This section identifies preliminary construction information about the project including size and uses.</i>				
What are the dimensions of the project? See below:				
Site Area:	SF	Building Area:	GSF	
First Floor Elevation:		Any below-grade space:	Yes / No	
What is the construction classification?	New Construction	Renovation	Addition	Change of Use
Do you anticipate filing any variances with the MAAB (Massachusetts Architectural Access Board) due to non-compliance with 521 CMR?	YES		NO	
If yes, is the reason for your MAAB variance: (1) technical infeasibility, OR (2) excessive and unreasonable cost without substantial benefit for persons with disabilities? Have you met with an accessibility consultant or Disability Commission to try to achieve compliance rather than applying for a variance? Explain:	(1) OR (2)			

CURB RAMPS

APEX design versus PERPENDICULAR / DIRECTIONAL design

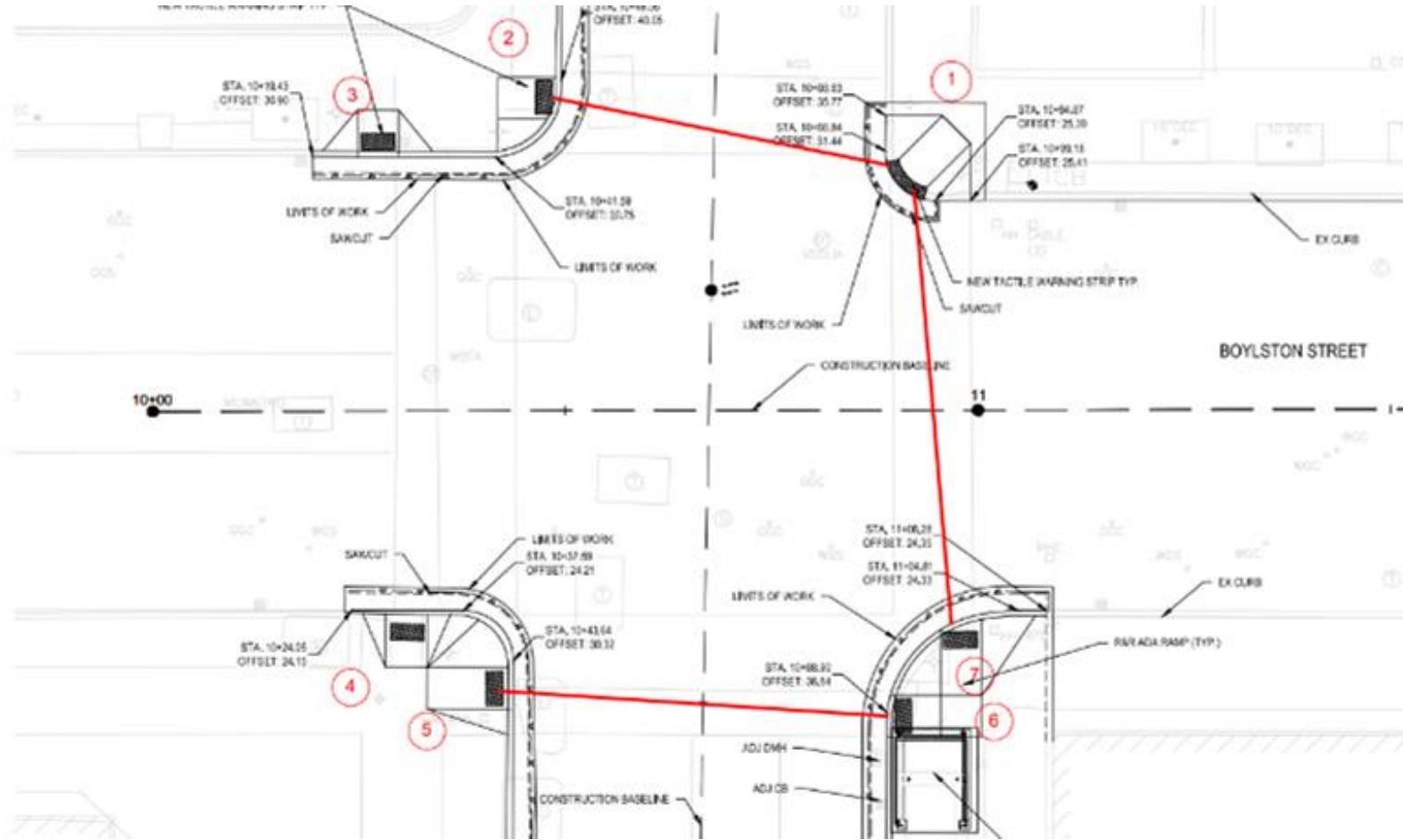


- **Visual disabilities**
 - *misleading*
- **Mobility disabilities**
 - *dangerous*



CURB RAMPS

APEX design versus PERPENDICULAR / DIRECTIONAL design



WHEELCHAIR LIFTS

Inclined lift versus Vertical lift and elevators





Jeffrey Yasuo Mansfield

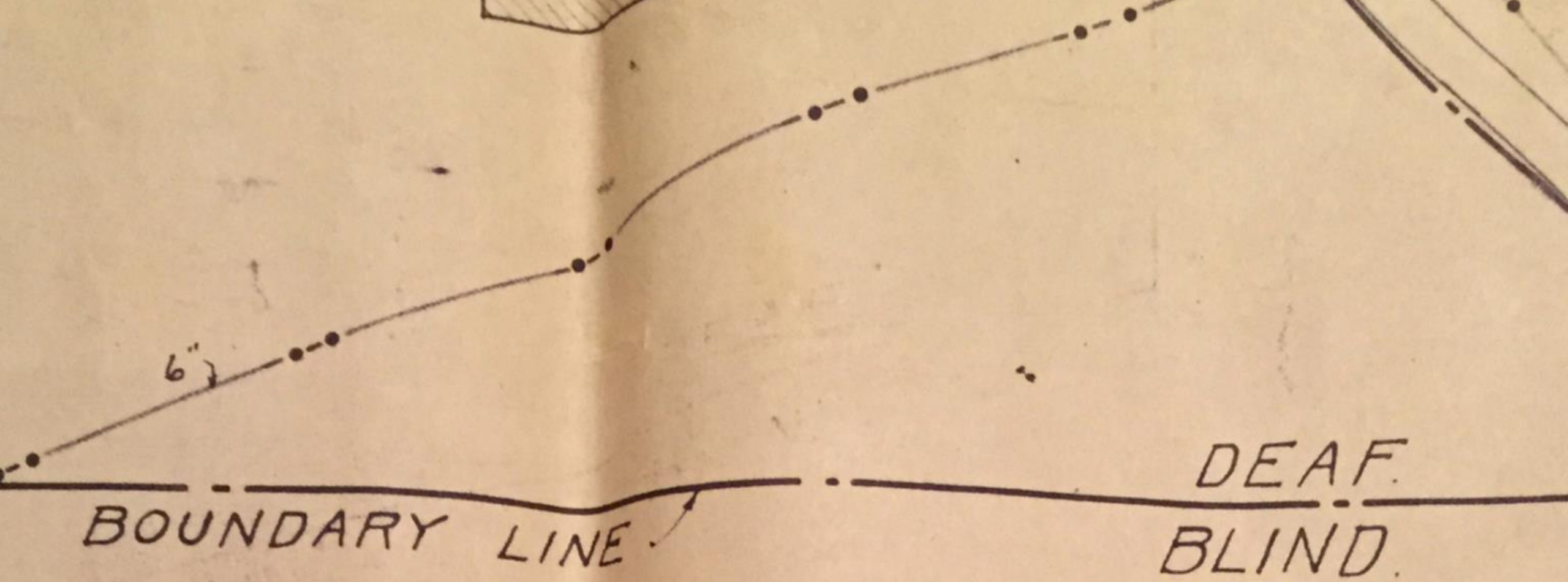
Principal, Deaf Space and Disability Justice Lab, MASS Design

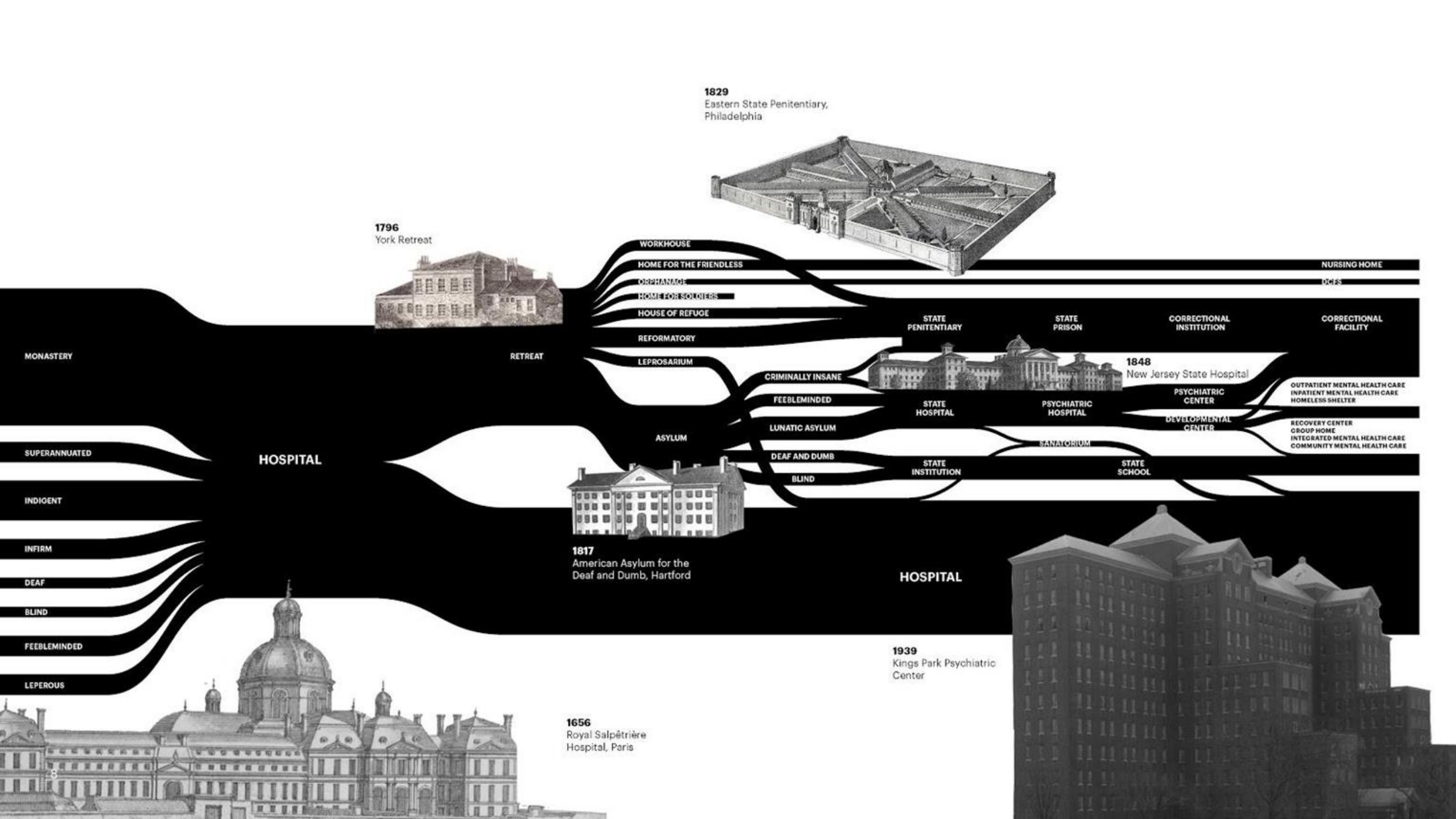
Jeffrey Yasuo Mansfield is a principal at MASS Design Group and the director of MASS's Deaf Space and Disability Justice Lab, which focuses on uplifting the lived experience and cultural memory of Deaf and Disabled communities. Jeffrey is also an inaugural recipient of the Ford and Andrew W. Mellon Foundation's Disability Futures fellowship and is a John W. Kluge Fellow at the Library of Congress. He has taught design studios at the University of Michigan and Harvard Graduate School of Design and co-authored *The Architecture of Health*, published by Cooper Hewitt, Smithsonian Design Museum. His current research explores the formation of Deaf and Disability spaces as expressions of cultural resistance in the nineteenth and twentieth centuries. Jeffrey has been deaf since birth.



**DEAF
PRESIDENT
NOW**







Our built environment has systematically disabled, displaced, and disenfranchised entire communities.

Architecture either hurts or heals.

**The project of access strives to dismantle
cycles of deprivation and disempowerment.**



Access

Law

Rights

Static

Codes

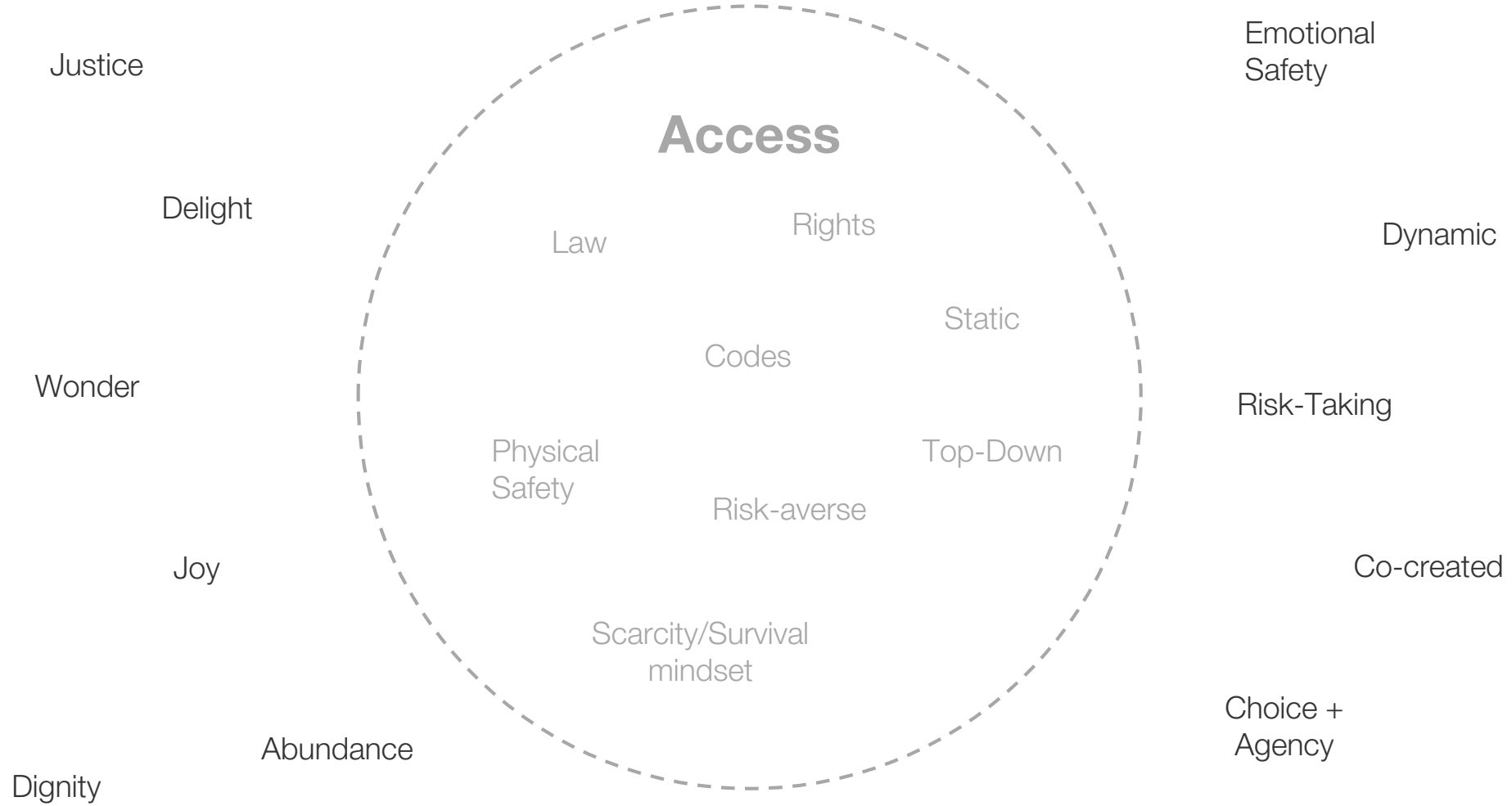
Top-Down

Physical
Safety

Risk-averse

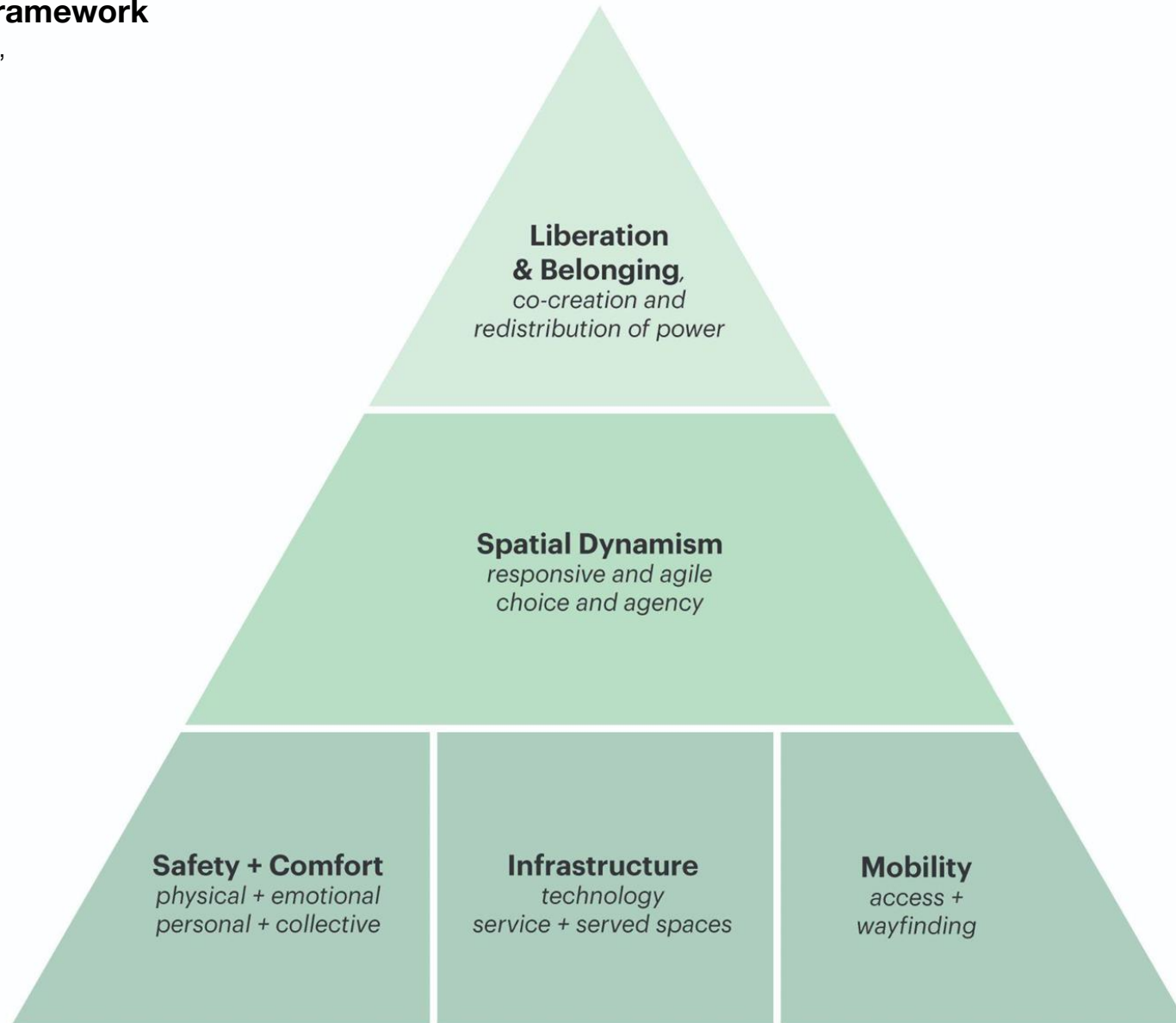
Scarcity/Survival
mindset

Liberatory Access

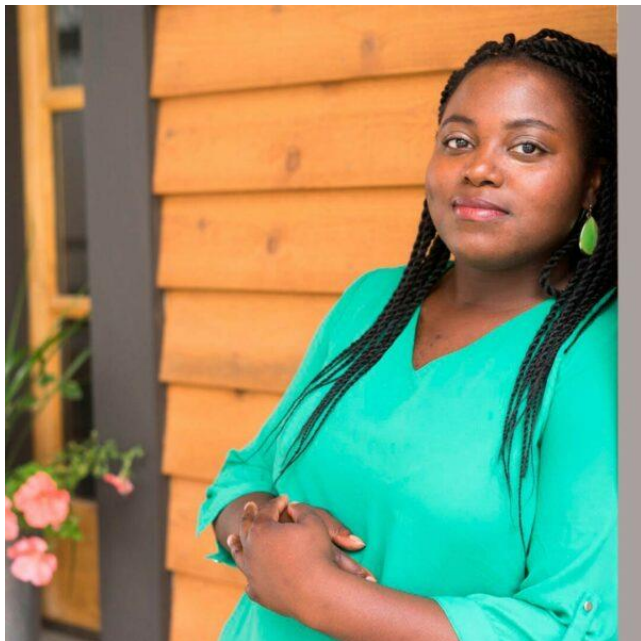


Liberatory Access Design Framework

co-developed with Joshua Halstead,
Critical Design Lab, Berkeley







Allentza Michel

**Founder/Principal & Creative Director, Powerful Pathways
Program Director & Visiting Practitioner, Tufts UEP**

Allentza Michel is an urban planner, artist, public policy advocate and researcher with a background in community organizing, youth development and human service. She has 22 years of diverse experience across community & economic development, education, food security, public health and transportation in local, national and international settings. Such experiences, both professional and personal, inform her current work in civic design, community and organizational development, and social equity.

About Powerful Pathways

Powerful Pathways is a creative civic design lab and consulting practice that works in community development using arts and media technology with the applications of design thinking and social equity principles.

- Executing strategic events exploring topics in Urban Policy
- Placemaking/Placekeeping Initiatives & “Civic Hacks”
- Creative Community Engagement and User Experience Strategy;
- Equity, Cultural Competency and Diversity & Inclusion trainings;
- Program Design and Development;
- Research and;
- Project Technical Assistance



Technology infused community planning





Citywide Planning GoBoston 2030





The Forum on Engaging Immigrant Entrepreneurs

POWERFUL PATHWAYS PRESENTS ...



PLANNING FOR EQUITY

[HTTPS://PLANNERSOFCOLOR.TALK.EVENTBRITE.COM](https://plannersofcolor.talk.eventbrite.com)

WEDNESDAY, JULY 22 • 5:30- 7:00 PM EST

Join us for this critical discussion centering the distinct perspectives of three planners of color working to create more equitable cities in Massachusetts and across America.

ELIJAH ROMULUS

Assistant Town Planner - Bridgewater, MA



PEDRO SOTO

Planning Director - Lawrence, MA



LILY SONG

Lecturer in Urban Planning and Design - GSD



Equality



The assumption is that **everyone benefits from the same supports**. This is equal treatment.

Equity



Everyone gets the supports they need (this is the concept of “affirmative action”), thus producing equity.

Justice



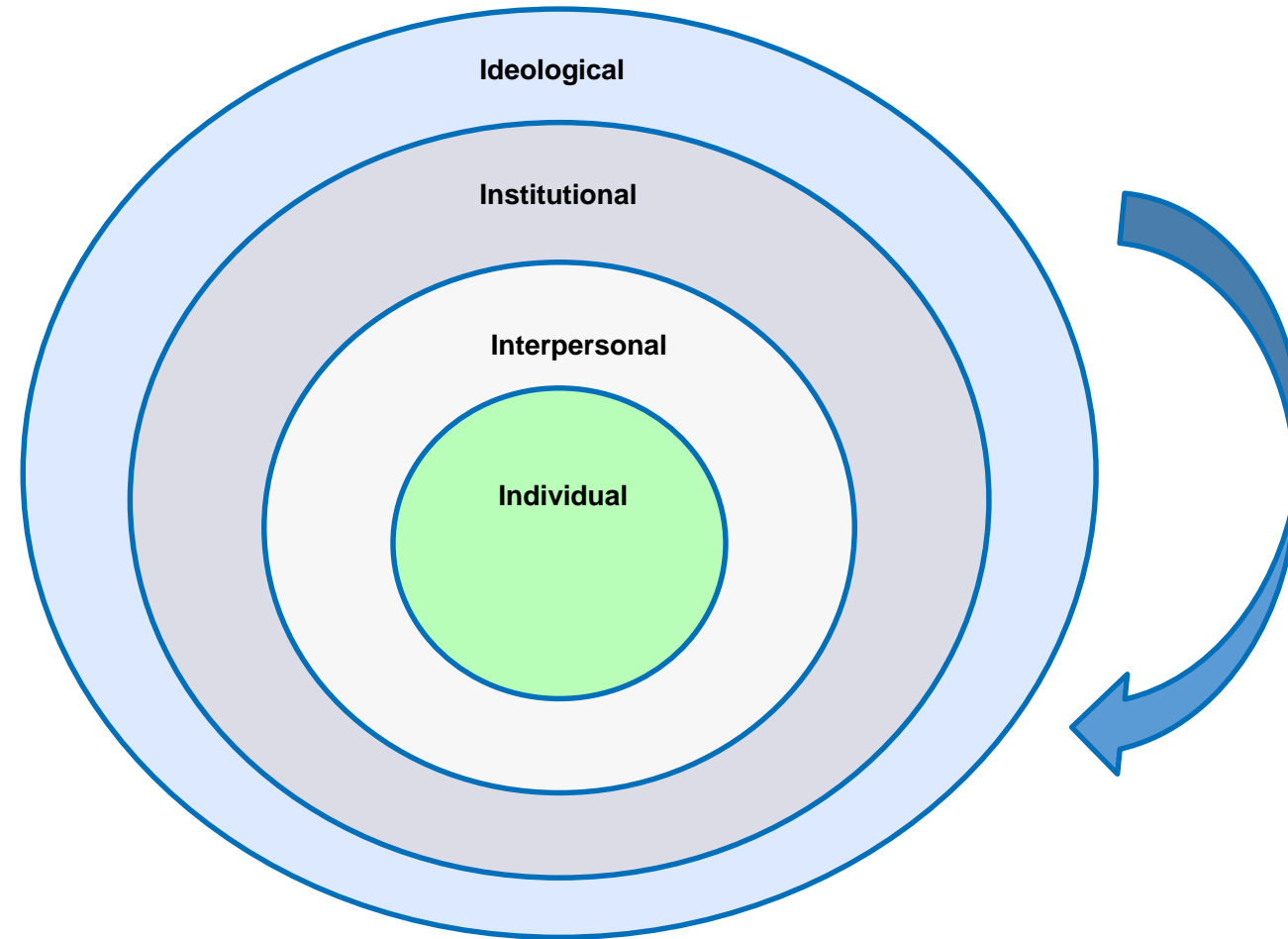
All 3 can see the game without supports or accommodations because **the cause(s) of the inequity was addressed**. The systemic barrier has been removed.

Working with an Equity Lens: The 4 I's

Equity work is cyclical and therefore is not a one-time deal.

It takes ongoing practice.

It is fluid and evolves across systems and networks, as we evolve.





INTERSECTIONS:

MOBILITY, EQUITY, AND THE BUILT ENVIRONMENT

OCTOBER

28-29

**A SYMPOSIUM
ON
INTERSECTIONAL
AND
PARTICIPATORY
DESIGN
PROCESSES**

*Hosted by
BSA Women in
Design in
collaboration with
the **Design for
Aging Committee,
Access
Committee, and
the BSLA***

A SYMPOSIUM BY



IN PARTNERSHIP WITH

ACCESS COMMITTEE

**DESIGN FOR AGING
COMMITTEE**



GOLD

SASAKI



SILVER

Perkins&Will

DIMELLA
SHAFFER



BRONZE



SUPPORTER

utile