

# EDI Network / On the Same Page – March 2020

- **Book:** *The Yellow House: A Memoir* by Sarah M. Broom (456 pages)
- **Article:** *Black Landscapes Matter* by Kofi Boone (18 pages)  
<https://groundupjournal.org/black-landscapes-matter>  
Black Landscapes Matter was originally printed in *Ground Up Journal - Issue 06: OF PROCESS*  
The Landscape Architecture & Environmental Planning Journal of University of California, Berkeley
- **Audio/Video:** Charisse Gibson's three-part “Tremé: Death of a Neighborhood, Survival of a Culture” series, 4WWL/CBS New Orleans  
<https://www.wwltv.com/article/news/local/orleans/treme-death-of-a-neighborhood-survival-of-a-culture/289-07fb2e94-13b1-4222-9e80-834abdce9f2f>  
(each part approx. 10 minutes)

- **Be present** – Honor the space with our attendance, attention, and energy as best able.
- **Be respectful** – Each person’s life, needs, external realities, & prioritization of time are individual to them. There is no one true way to design and in the same way there is no one way to understand our lives. Be respectful of individual experiences as we all learn together.
- **Share space / Make space** – Sometimes named as “Give space/Take space,” this is intentionally reworded to prioritize a collective, collaborative exchange where we are all encouraged to recognize the needs of the group, the power dynamics at play, and our roles in creating space for one another.
- **Embrace conflict and discomfort** - Sometimes written “ouch/oops” we acknowledge that any exchange of ideas is likely to include discomfort and unintended missteps. It is important to assume positive intent but prioritize impact and accountability.
- **Use “I” statements** – Speak from personal experience rather than assumptions or generalizations.
- **“Speaking in draft”** – permission to make mistakes and accept correction.

# Next month – Friday, April 30

- **Book:** *I Hope We Choose Love: A Trans Girl's Notes from the End of the World* by Kai Cheng Thom (144 pages)
- **Audio/Video:** *Disclosure* (Documentary, 2020) available on Netflix (1hr 47m)

EDI Network: On The Same Page

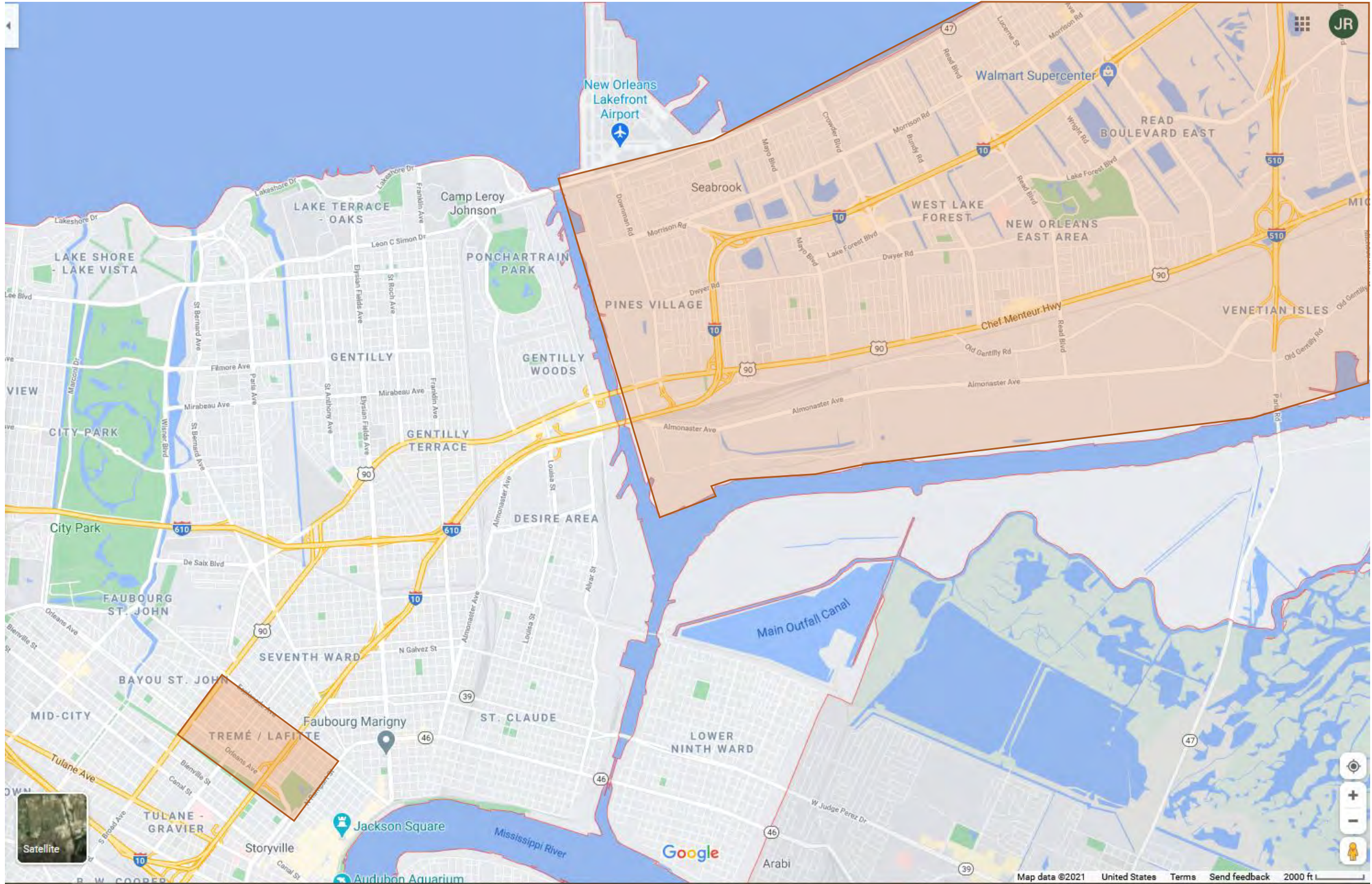
<https://www.architects.org/knowledge-communities/edi-network/on-the-same-page>



Broom's siblings and their father outside their home at 4121 Wilson in 1977. Credit: Sarah M. Broom



Broom's sister Lynette with their father, Simon, outside the yellow house in 1976. Credit: Sarah M. Broom



New Orleans  
Lakefront  
Airport

Walmart Supercenter

READ  
BOULEVARD EAST

LAKE TERRACE  
- OAKS

Camp Leroy  
Johnson

PONCHARTRAIN  
PARK

Seabrook

WEST LAKE  
FOREST

NEW ORLEANS  
EAST AREA

LAKE SHORE  
- LAKE VISTA

GINNARD  
VILLAGE

VENETIAN ISLES

GENTILLY

GENTILLY  
WOODS

Chef Menteur Hwy

CITY PARK

GENTILLY  
TERRACE

DESIRE AREA

Main Outfall Canal

FAUBOURG  
ST. JOHN

SEVENTH WARD

ST. CLAUDE

LOWER  
NINTH WARD

BAYOU ST. JOHN

Faubourg Marigny

TREMÉ / LAFITE

TULANE -  
GRAVIER

Jackson Square

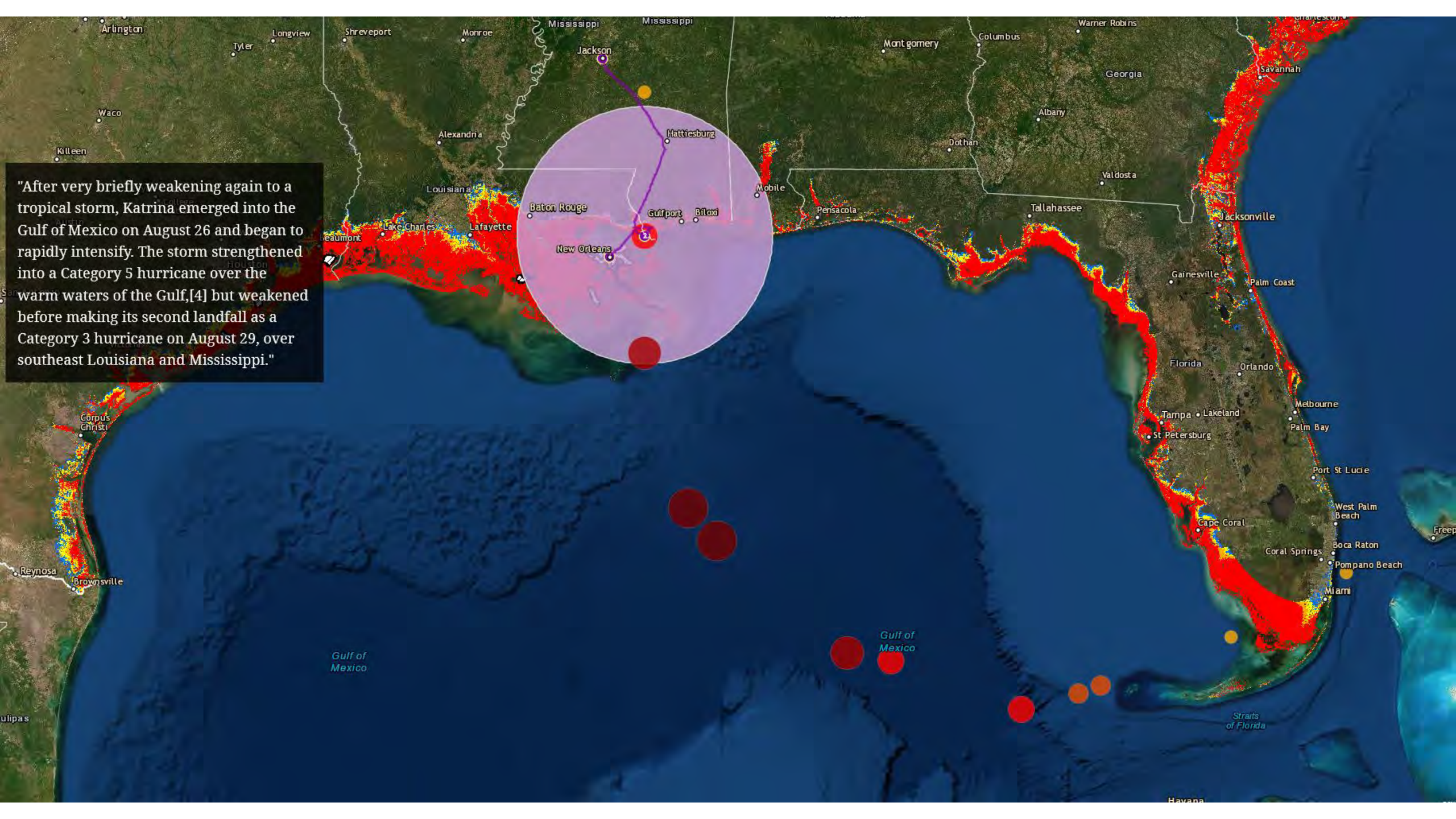
Mississippi River

Storyville

Google

Arabi

"After very briefly weakening again to a tropical storm, Katrina emerged into the Gulf of Mexico on August 26 and began to rapidly intensify. The storm strengthened into a Category 5 hurricane over the warm waters of the Gulf,[4] but weakened before making its second landfall as a Category 3 hurricane on August 29, over southeast Louisiana and Mississippi."

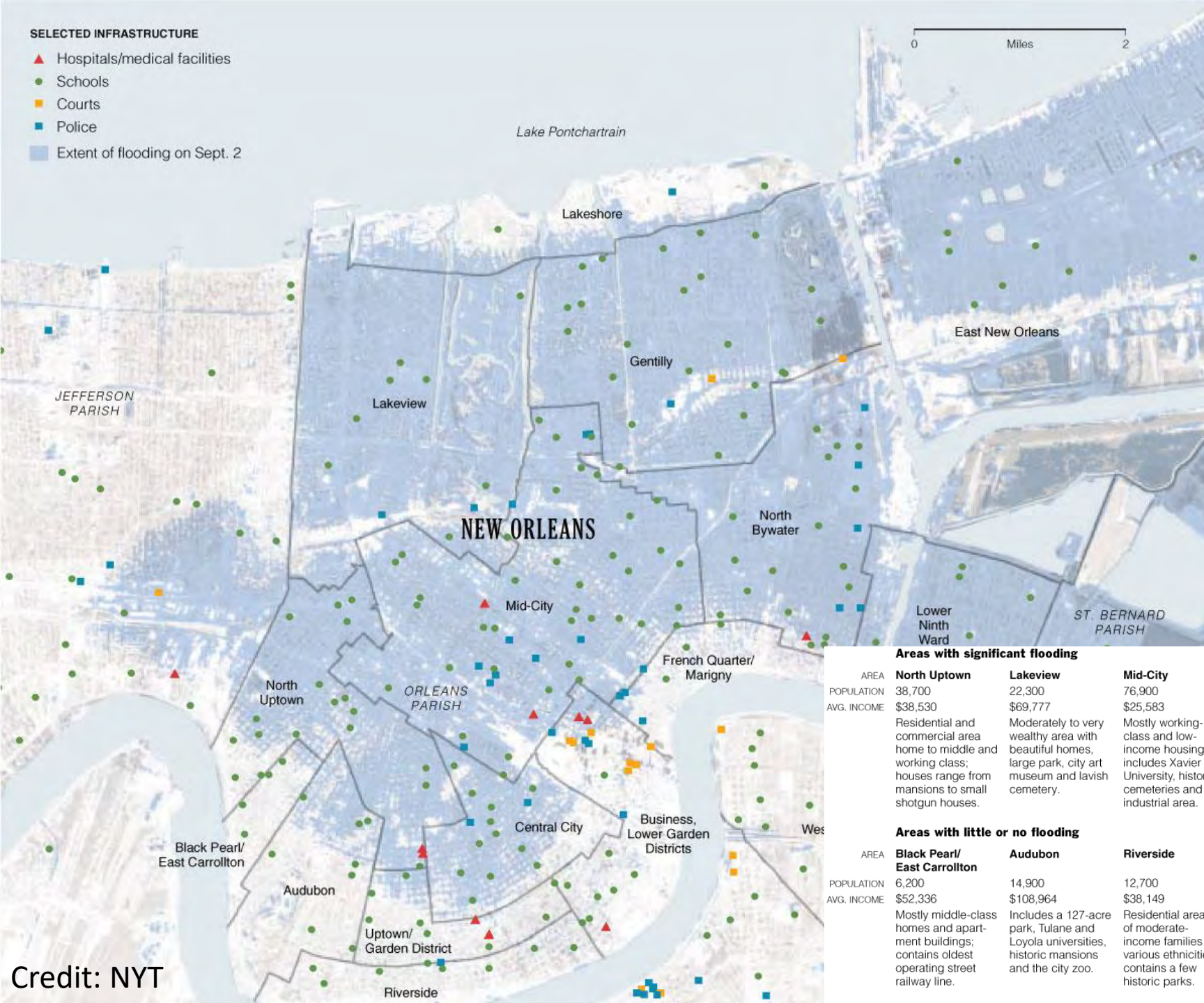




**SELECTED INFRASTRUCTURE**

- ▲ Hospitals/medical facilities
- Schools
- Courts
- Police
- Extent of flooding on Sept. 2

0 Miles 2



The map shows the extent of the flooding on September 2, 2005, after the water level had stopped rising but several days before crews were able to plug breaches in levees and start pumping water out.

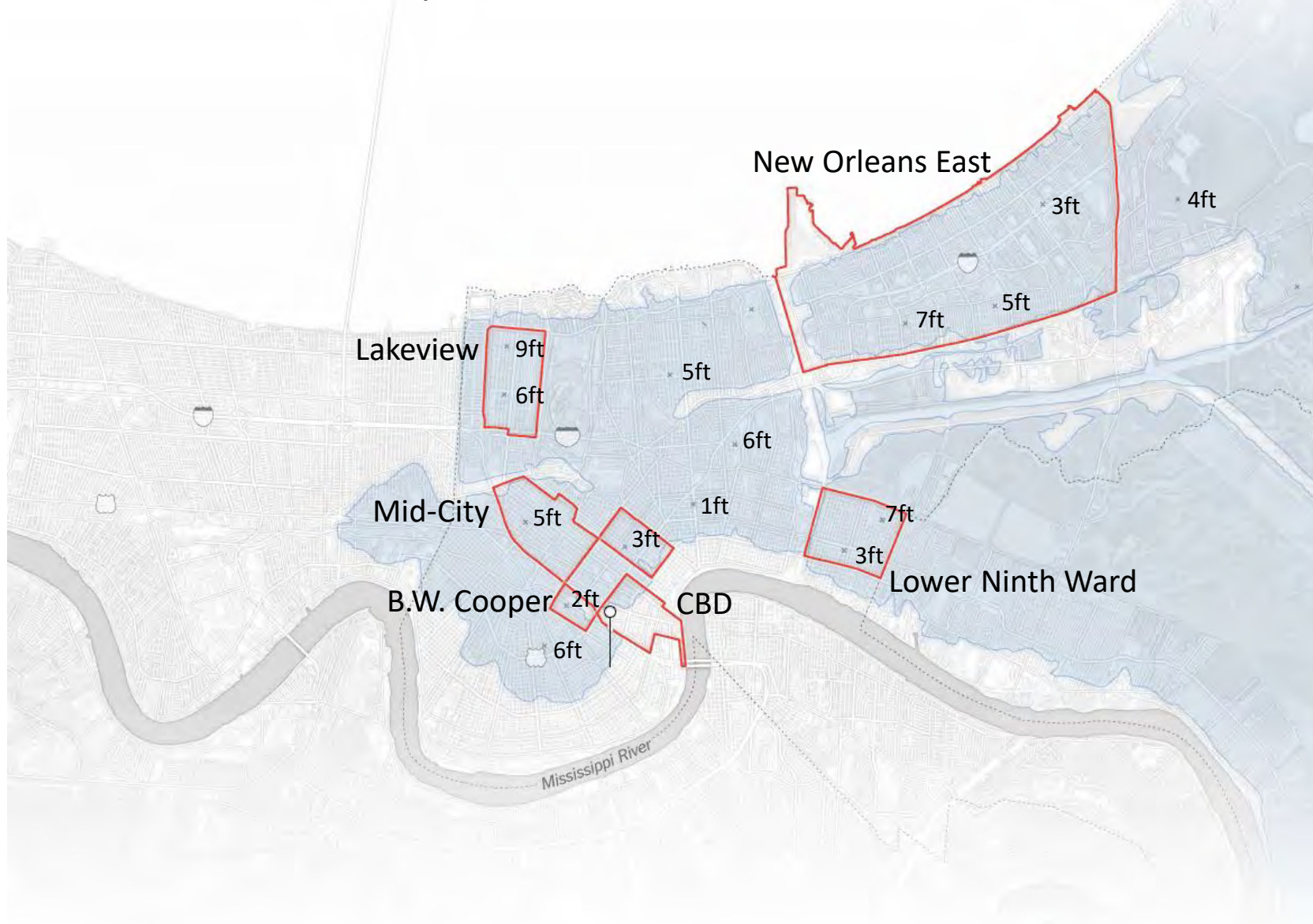
**Areas with significant flooding**

	North Uptown	Lakeview	Mid-City	Central City	Gentilly	North Bywater	Lower Ninth Ward	East New Orleans
AREA	North Uptown	Lakeview	Mid-City	Central City	Gentilly	North Bywater	Lower Ninth Ward	East New Orleans
POPULATION	38,700	22,300	76,900	26,600	42,000	32,900	19,500	96,400
AVG. INCOME	\$38,530	\$69,777	\$25,583	\$26,962	\$43,272	\$27,720	\$28,826	\$41,997
	Residential and commercial area home to middle and working class; houses range from mansions to small shotgun houses.	Moderately to very wealthy area with beautiful homes, large park, city art museum and lavish cemetery.	Mostly working-class and low-income housing; includes Xavier University, historic cemeteries and industrial area.	Home to low- and middle-class families, who mostly rent; many homes are shotgun houses built on brick piers.	Mostly middle-class area with high rate of home ownership; includes historic district and 200-acre park.	Mostly low-income and working-class housing with large industrial area; of historical significance to African-American history.	Mostly middle- to low-income families who rent; large number of small businesses, schools and churches.	Moderate-income area with subdivisions, large business and manufacturing areas and a wildlife refuge.

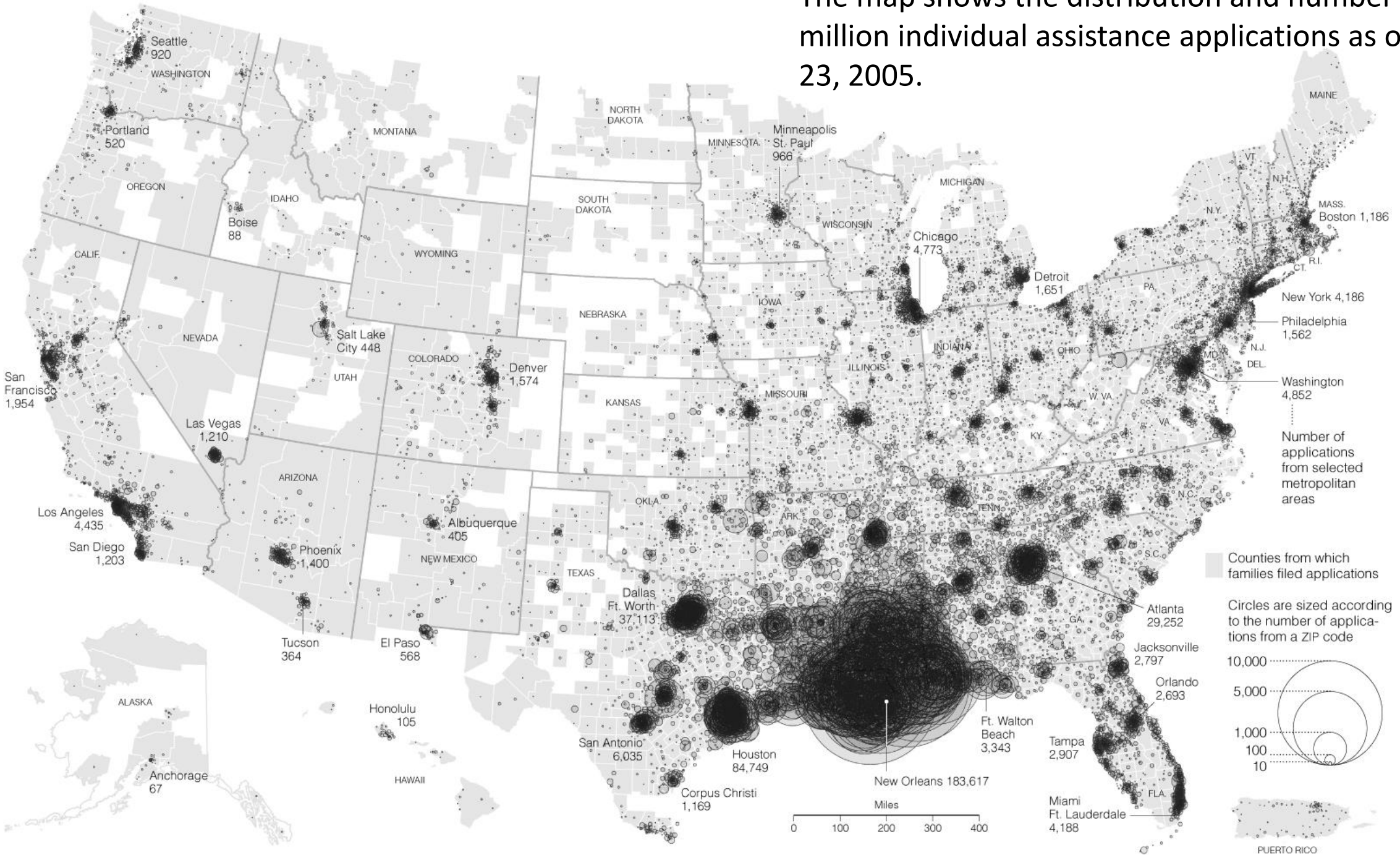
**Areas with little or no flooding**

	Black Pearl/ East Carrollton	Audubon	Riverside	Uptown/ Garden District	Business, Lower Garden Districts	French Quarter/ Marigny	West Bank	Lakeshore
AREA	Black Pearl/ East Carrollton	Audubon	Riverside	Uptown/ Garden District	Business, Lower Garden Districts	French Quarter/ Marigny	West Bank	Lakeshore
POPULATION	6,200	14,900	12,700	11,900	10,900	4,200	58,800	5,800
AVG. INCOME	\$52,336	\$108,964	\$38,149	\$59,203	\$47,985	\$58,571	\$45,249	\$112,094
	Mostly middle-class homes and apartment buildings; contains oldest operating street railway line.	Includes a 127-acre park, Tulane and Loyola universities, historic mansions and the city zoo.	Residential area of moderate-income families of various ethnicities; contains a few historic parks.	Home to wealthy and middle-class families, with architecture ranging from mansions to single shotgun houses.	Contains main commercial, business, government and recreation facilities, along with art galleries and historic buildings.	Oldest part of New Orleans and main tourist destination; contains many hotels, bars, shops and historic homes.	Industrial and residential area, including a large military installation, small businesses and subdivisions.	Wealthiest residential area of the city; includes popular entertainment district and the University of New Orleans.

Areas of significant flooding, numbers mark flood depth in feet.



The map shows the distribution and number of the 1.36 million individual assistance applications as of September 23, 2005.



Credit: NYT

# New Orleans East

This area on the southern shore of Lake Pontchartrain is dense with sturdy brick homes. As is the case across the city, residents with flood insurance are the ones who have started to return.



MAP KEY	
Renovation	No progress
Has resident	Guttled
Trailer	Torn down



7733 MAYO BLVD. **Grethel and Joseph LeBlanc** hope to be back in their home in a month or two if they can get their busy contractor to finish the renovation. They have lived in a trailer on the front lawn since March 11.

Joe Ward and Erin Aigner/The New York Times

# RACIAL DIVISIONS IN NEW ORLEANS

KEY: ● White ● Black ● Asian ● Hispanic ● Other



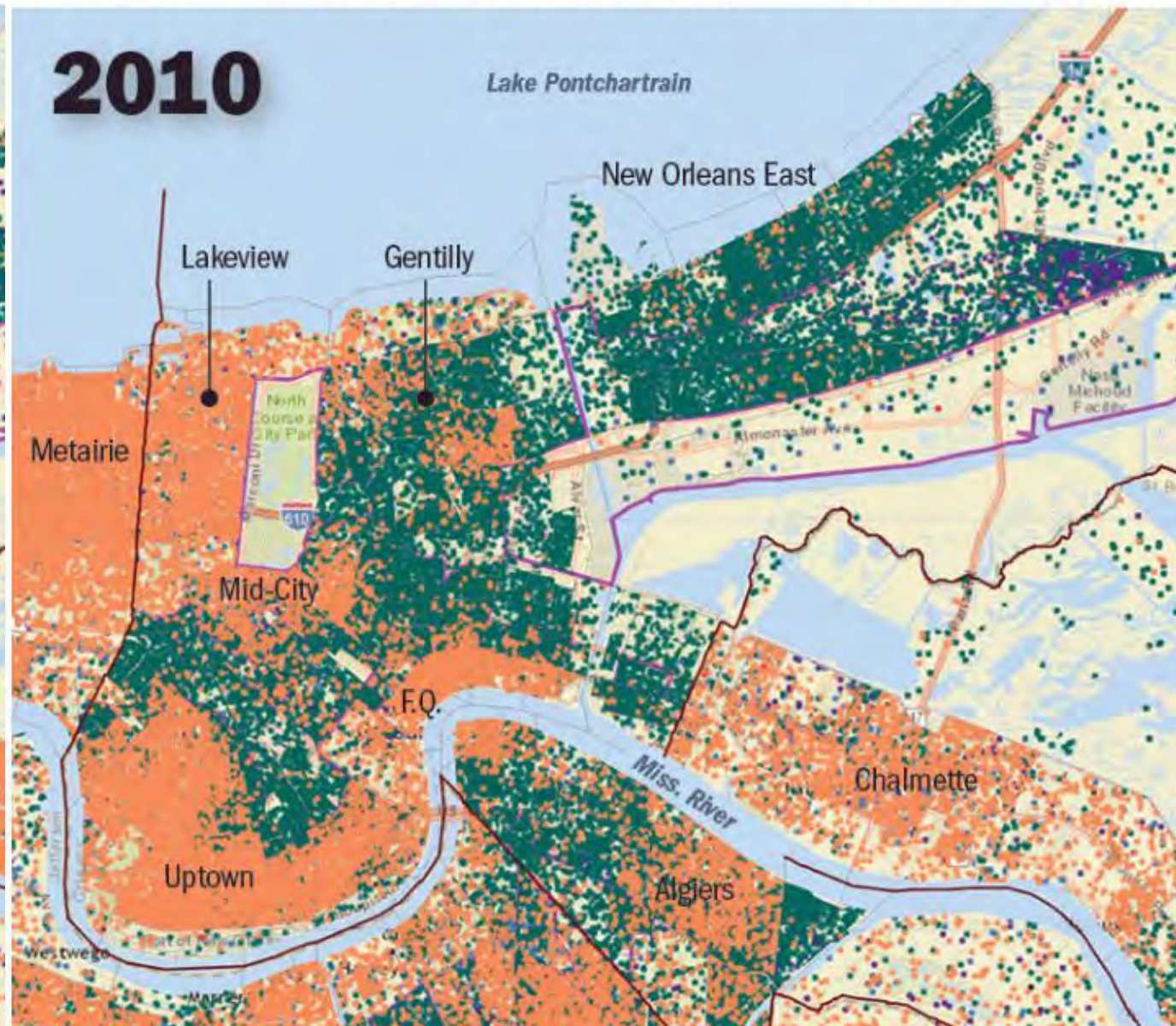
Source: U.S. Department of Housing and Urban Development

Advocate ani

This photo represents the racial demographic of New Orleans

# RACIAL DIVISIONS IN NEW ORLEANS

KEY: ● White ● Black ● Asian ● Hispanic ● Other 1 dot = 5 p



Source: U.S. Department of Housing and Urban Development

Advocate animated map by DAN

This photo represents the racial demographic of New Orleans

By 1928, one-third of the South's rural black school children and teachers were served by Rosenwald Schools.





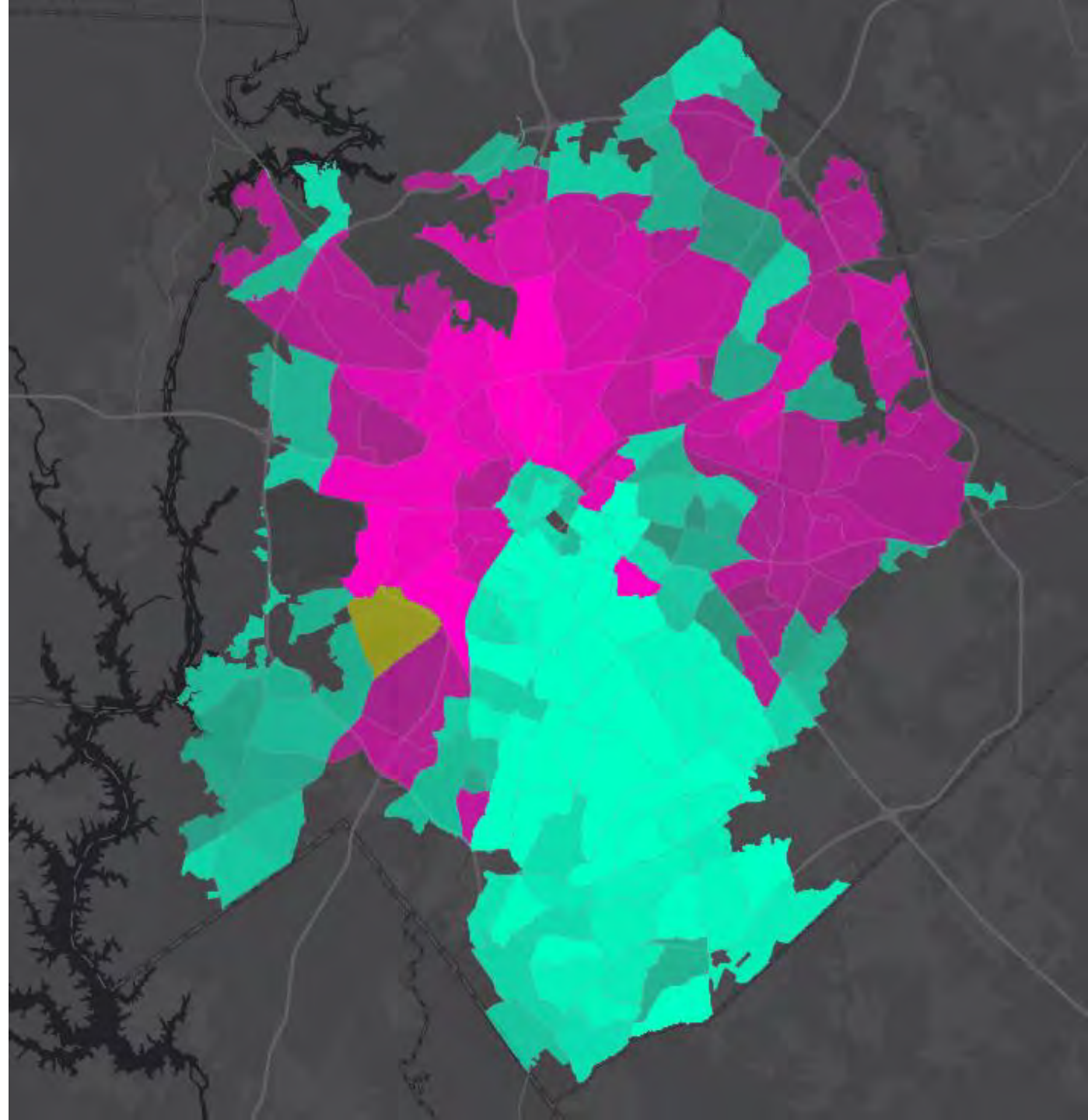
### Census Tracts Charlotte Race\_WFL1

#### Predominant category

- WhiteAlone
- BlackorAfricanAmericanAlone
- AsianAlone
- AmericanIndianandAlaskaNativeAlone
- NativeHawiiianOtherPacificIslanderAlone
- SomeOtherRaceAlone
- TwoRacesIncludingSomeOtherRace
- TwoorMoreRaces
- TworacesexcludingSomeotherraceandthreeormore races

#### Strength of predominance

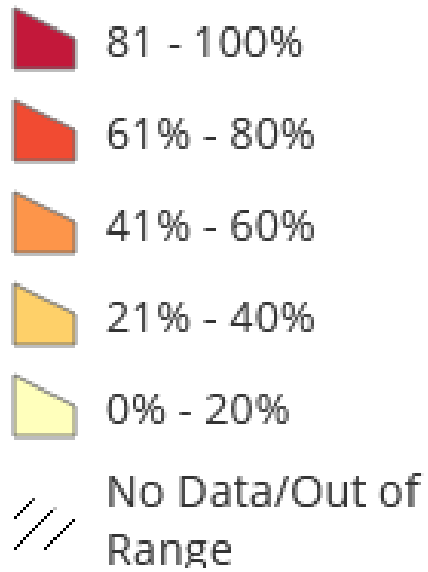
- > 84
- < 12



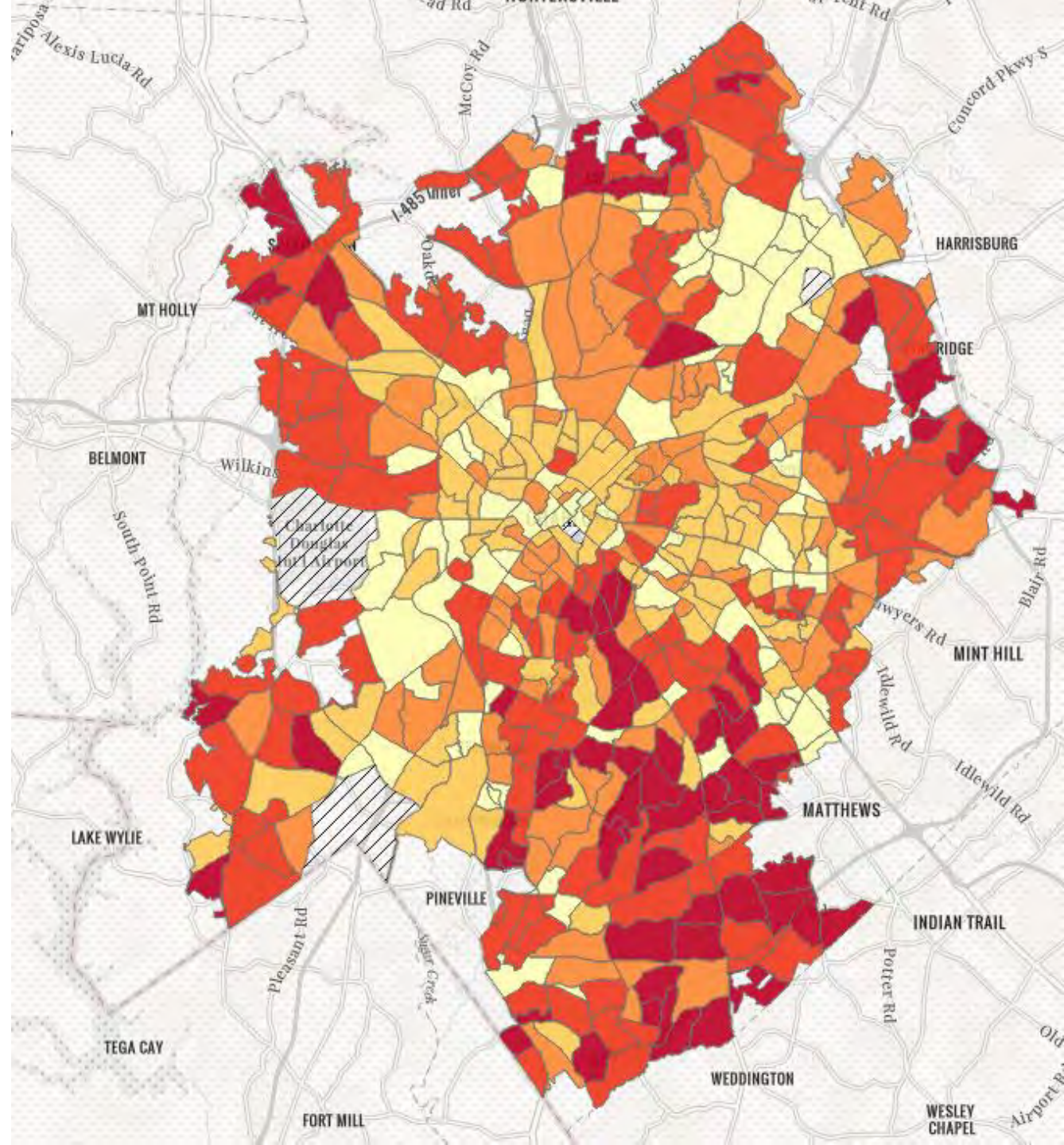
<https://www.arcgis.com/apps/MapSeries/index.html?appid=ecca6c2081634b85a3ea5ce37f136fe8>

## Charlotte Home ownership

### Home Ownership Rate



## HOLC



<https://www.arcgis.com/apps/MapSeries/index.html?appid=ecca6c2081634b85a3ea5ce37f136fe8>