

Designing Just Futures Summit

Collaborative
Practices for
Spatial Justice

09.19.24
09.20.24



Designing Just Futures

Building a just and sustainable Boston. Together.

This two-day summit is dedicated to exploring and promoting equitable design practices and spatial justice. Centered around fostering meaningful dialogue and sharing innovative solutions, we hope this event inspires systemic change in the design of our built environments.

Welcome to the BSA Space! The BSA is a non-profit membership organization committed to improving the quality of life for Boston-area residents by championing innovation in the built environment with an emphasis on equity and sustainability.

Get ready to:

Explore spatial justice principles

Bridge theory and practice

Foster collaborative learning and exchange








Equip participants with actionable tools

Build a network of change-makers



Summit Agenda

Day 1

8:30 AM - 9:15 AM	Registration	BSA
9:15 AM - 9:30 AM	Welcome & Introduction	Salt Gallery <i>Rebecca Berry</i>
9:30 AM - 10:30 AM	Framing Spatial Justice	Salt Gallery <i>Opening Conversation: Reverend Mariama White-Hammond, Jha D Amazi, Danyson Tavares</i>
10:45 AM - 12:15 PM	Spatial Justice in Practice (breakout sessions)	
	Ecologies	
	Legacies	
	Practices	
	Infrastructures	
12:15 PM - 1:15 PM	Lunch, courtesy of Amba	BSA
1:15 PM - 2:45 PM	Voices of Spatial Justice	Salt Gallery <i>Panel discussion: Gabriela Cartagena, Lawrence Cheng, Design Tyndal, Breeze Outlaw</i>
3:00 PM - 4:30 PM	Advancing Spatial Justice (workshops)	
	Measuring Impact	
	Engagement & Participation	
	Integrating Practice	
4:45 PM - 5:15 PM	Closing Remarks	Gallery <i>Rebecca Riccio</i>
5:30 PM - 7:30 PM	Reception	MASS Design Group

Day 2

9:30 AM - 12:00 PM	Spatial Justice on the Ground	Meet on-site*
	East Boston	
	Roxbury	
	Chinatown	
	Shirley Ave, Revere	
1:30 PM - 4:30 PM	Designing Just Futures Design Charrette	Salt Gallery
4:45 PM - 5:15 PM	Closing Session	Salt Gallery

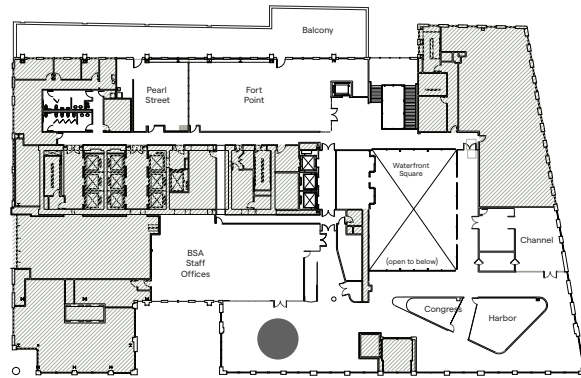
*More information in provided Site Visit Guide

Day 1

Opening Conversation

9:30am to 10:30am

Salt Gallery



Framing Spatial Justice

Jha D Amazi, MASS Design Group

Reverend Mariama White-Hammond, New Roots AME Church

Danyson Tavares, incoming Executive Director, BSA

The **Designing Just Futures** summit opens with a powerful conversation that sets the stage for a day of exploration. Featuring Rev. Mariama White-Hammond, Jha D Amazi, and Danyson TavDares, will delve into these critical concepts within Greater Boston's context.

Spatial justice analyzes how histories, policies, and systems have inequitably structured access to space along lines of race, class, ability, and other social constructs. It exposes the role of the built environment in perpetuating harm or cultivating well-being.

Design justice, in turn, reframes conventional design processes to acknowledge that communities most impacted by spatial inequities are also experts who should have decision-making power over their design.

The conversation will touch on the summit's four key themes:

Legacies, examining historical roots of spatial injustices; **Ecologies**, exploring environmental justice in urban design; **Infrastructures**, analyzing urban systems' impact on spatial equity; and **Practices**, sharing strategies for inclusive design and partnerships.

This opening session lays the foundation for the summit, equipping participants with common language and a set of shared understandings. Throughout the day, attendees will engage in in-depth discussions, workshops, and collaborative learning experiences that build upon these frameworks.

Day 1

Participants

Designing Just Futures



A Principal at MASS Design Group, **Jha D Amazi** leads the Public Memory and Memorials Lab, engaging communities to design projects such as the Franklin Park Action Plan, the Emmett Till & Mamie Till-Mobley National Monument Project, the Gun Violence Memorial Project, and the Sugar Land 95 Cemetery Revitalization Project. Beyond her contributions at MASS, Jha D is a spoken word artist, event producer, and SpaceMaker for the LGBTQ+ communities of color. In 2023, she was appointed to the Governor's Advisory Council on Black Empowerment by Gov. Maura Healey. Jha D graduated with honors from Northeastern University (B.S. Arch) and the University of Pennsylvania (M. Arch I).



Rev. Mariama White-Hammond, a Boston native, began her activism in high school with Project HIP-HOP, later serving as its Executive Director for 13 years. In 2017, she earned a Master of Divinity from BU and was ordained in the African Methodist Episcopal Church, founding New Roots AME Church in Dorchester in 2018. From 2021 to 2024, Rev. Mariama served as Boston's Chief of Environment, Energy, and Open Space, focusing on climate policy, equity, and environmental justice. She led initiatives including amending building emissions regulations and creating green jobs programs for youth. Rev. Mariama's approach to ecological work is deeply intersectional, emphasizing the connections between environmental and social issues. Her work has earned her numerous accolades, including recognition from the Boston NAACP and Grist 50 Fixers.



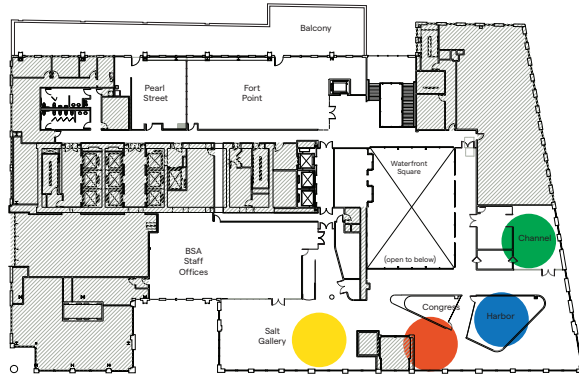
Danyson Tavares, Assoc. AIA and NOMA member, becomes Executive Director of the Boston Society for Architecture (BSA) in November 2024. With degrees from Wentworth Institute of Technology, his career spans architectural practice, education, and community development. Currently leading YouthBuild Boston, he provides pathways for young people of color in the building industry, advancing affordable housing and initiatives to make architecture, engineering, and construction more diverse and accessible. As an educator and BSA AIA Board member, he bridges practice, advocacy, and education. His BSA leadership will advance the BSA's mission of climate action, equity, and shaping just communities through design.

Day 1

Case Study Breakouts

10:45am to 12:15pm

**Salt, Harbor,
Channel, Gallery**



Spatial Justice in Practice

Gabriel Cira, Architect, ARCH CIRA

Dr. Lily Song, Assistant Professor of Race and Social Justice in the
Built Environment, Northeastern University

Maria Salim, Master's Candidate, Urban Planning and Policy, Northeastern

Laura Marie Christopher, Transformative Development Initiative Fellow
(MassDevelopment), Revere

Mark Araujo, Community Engagement Manager, Boston Food Forest Coalition

Melissa Teng, Design Research Lead, ds4si

The **Spatial Justice in Practice** breakout sessions present case studies structured around four themes that shape our understanding of spatial justice principles in the built environment:



Ecologies explores the intersection of environmental justice and urban design, examining how spatial decisions impact ecological systems and community well-being.



Legacies delves into the historical roots of spatial injustices, addressing how past decisions continue to influence present-day urban landscapes.



Practices focuses on innovative approaches to collaboration, community participation, and navigating the complex political, economic, social, and spatial constraints of real-world projects.



Infrastructures analyzes and reimagines the physical, social, and ecological systems that shape access, agency, and equity across the public realm.

Day 1

Breakouts

Designing Just Futures



Ecologies, with Gabe Cira *Eastie Farm Net Zero Greenhouse*

The Ecologies breakout explores spatial justice and environmental justice through the Zero-E Community Greenhouse in East Boston. A collaboration between ARCH CIRA and Eastie Farm, this project transforms a vacant parcel into a multifunctional community asset. Participants will examine how this zero-emissions structure addresses climate resilience, food sovereignty, and community stewardship.



Legacies, with Dr. Lily Song and Maria Salim *Unsettled Accounts*

"Unsettled Accounts" is an oral history project examining the complex legacy of urban renewal and highway projects in Boston from the late 1950s onward, focusing on how Black Bostonians, who had become homeowners and business operators, were systematically dispossessed and displaced through eminent domain, questionable tax liens, predatory refinancing practices, and other mechanisms, all within a single generation.



Practices, with Laura Marie Christopher *Shirley Avenue Shared Spaces Pilot, Revere*

The Shared Space Pilot Program addresses affordable commercial space needs in a diverse neighborhood. Through MassDevelopment's TDI program, this innovative model offers grants for space-sharing initiatives, preventing displacement while supporting emerging entrepreneurs. The project navigates multiple constraints through collaborative partnerships, community-centered design, and explores architects' evolving roles as facilitators and strategic partners.

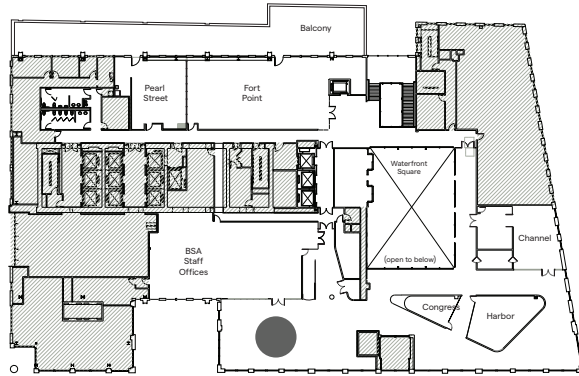


Infrastructures, with Mark Araujo and Melissa Teng *Relational Infrastructures, Public Kitchens*

Boston Food Forest Coalition and ds4si reimagine infrastructures as multifunctional, community-driven spaces. Their initiatives transform vacant lots into vibrant public resources and nodes in networks of mutual-aid, integrating food production, ecological restoration, and stewardship of place. Through collaborative design, prototyping and scaling strategies, they demonstrate how infrastructures may redefine public space as a platform for cultural expression.

Day 1

Panel Discussion
1:15pm to 2:45pm
Salt Gallery



Voices of Spatial Justice

Gabriela Cartagena, East Boston Spatial Justice Lab, City Life / Vida Urbana
Dwain Tyndal, Executive Director, Alternatives for Community & Environment
Breeze Outlaw, Senior Urban Designer, City of Boston
Lawrence Cheng, Principal, Bruner/Cott, Chinatown Community Land Trust

Ben Peterson, Community Design Director, BSA
Facilitator

The **Voices of Spatial Justice** panel discussion brings the theoretical concepts of spatial and design justice into sharp focus through lived experiences. This 90-minute session features speakers from diverse Boston neighborhoods directly impacted by urban design and planning decisions. By amplifying community voices, the panel grounds the summit's discussions in real-world contexts, emphasizing the human impact of spatial justice issues and showcasing the power of community-led solutions. This approach ensures that our exploration of spatial justice is rooted in the realities faced by those navigating these challenges daily.

The panel's composition spans multiple generations, geographies, intersectional approaches, and various organizational structures, offering a multi-perspective view of spatial justice issues across Boston. From long-time activists to younger organizers, from municipal bodies to grassroots coalitions, each panelist brings a unique perspective on how spatial inequities have shaped their communities and how they're working to address these challenges. Through moderated discussion and audience Q&A, the session fosters meaningful dialogue about roles, opportunities, and accountabilities across various sectors.

Day 1

Panelists

Designing Just Futures



Lawrence K Cheng, Principal at Bruner/Cott Architects and Assistant Professor at Mass Art, has been a pivotal figure in Boston's Chinatown since the 1980s. His multifaceted career spans architecture, urban design, and community advocacy. Cheng's work includes affordable housing, community facilities, and historic preservation, with a focus on sustainable and equitable environments. He has been instrumental in Chinatown's planning and preservation. As a founding board member of the Chinatown Community Land Trust, Cheng continues to bridge professional practice with grassroots advocacy, embodying a commitment to spatial justice and community-led urban development.



Dwain Tyndal is the Executive Director of Alternatives for Community and Environment, a neighborhood-based environmental justice and transit-oriented development nonprofit. He has over 25 years of professional experience in economic development, community and neighborhood development, youth development and workforce development. Throughout his professional experience, Dwain has been able to communicate complex public policies to various stakeholders to show how community-based partnerships can build stronger communities and empower residents and businesses to take active roles in their neighborhoods.



Breeze Outlaw (they/them), is a Senior Urban Designer with the City of Boston, managing Boston Design Vision. Committed to justice, equity, and dignity, their portfolio spans diverse projects—from plazas to large-scale urban planning— all at the intersection of people and place. They collaborate with stakeholders, artists, and organizers to tackle challenges like food access disparities and create affirming spaces for Black womxn, non-binary individuals, and femmes. Breeze holds a BArch and MLA from North Carolina State University, is an Olmsted Scholar and former board member of the Landscape Architecture Foundation.



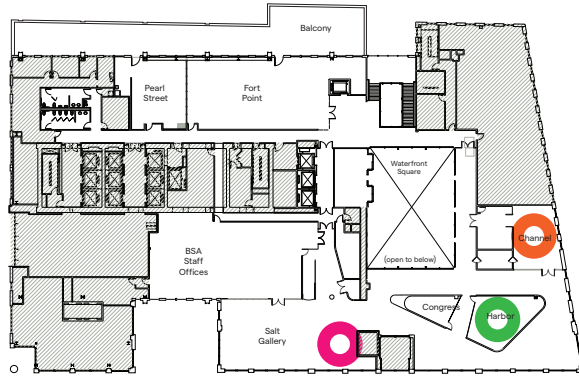
Gabriela Cartagena is a first-generation Salvadoran Honduran U.S. born citizen with parents who've each been deported and are now U.S. voting citizens. She is a photographer, filmmaker, educator, and housing justice + Immigrant rights organizer driven by the passion of her family history and neighbors. Gabriela has been documenting the stories on the streets she grew up in, in East Boston, during its rapid urbanization and ecological displacement of people, culture, nature, and tradition. In addition to her role as artist in residence with the East Boston Spatial Justice Lab, Gabriela is a Communications Director with City Life / Vida Urbana.

Day 1

Workshops

3:00pm to 12:15pm

Salt, Harbor, Channel



Advancing Spatial Justice



Measuring Impact

Jason Lee, Associate, Goody Clancy; Principal/Founder, FMRA



Engagement & Participation

Marissa Zampino | Community Organizer, MyRWA



Integrating Practice

Larissa Sattler & Ellie Thomas | Spatial Equity Research Practice, Payette

The afternoon workshops on **Advancing Spatial Justice** are 90-minute interactive sessions designed to bridge principles and practice. Participants will engage in focused group work across three key areas: community engagement, impact measurement, and professional integration. Using real-world scenarios, attendees will develop concrete strategies and actionable plans.

These workshops serve as a crucial link between morning discussions and the practical observations and applications on Day 2. By translating theoretical knowledge into practical, actionable strategies, the workshops aim to equip attendees with tools and perspectives to advance spatial justice in their respective fields.

Day 1 Workshops

Designing Just Futures

	NAIL	RING SHANK	STAPLE
RATE	0	0	+
COST	0	-	+
HOLDING	0	+	-
EFFORT	0	0	+
TOTAL	0	0	2

Measuring Impacts

This workshop explores measuring spatial justice impacts and introduces consensus-based decision-making to identify and define critical metrics. Challenging conventional economic indicators that perpetuate inequity, participants will brainstorm nuanced metrics for health, resilience, well-being. Using current Boston planning initiatives as a case study, attendees will learn to apply tools like a PUGH chart to tackle multidimensional ideas across evaluation criteria. The session aims to dismantle white supremacy culture by exploring alternative decision-making systems, emphasizing the importance of incorporating nuance in building stakeholder led impact metrics.



Cultivating Engagement and Participation

Participants will design a community engagement plan for MyRWA's urban heat mitigation project in an environmental justice neighborhood in Charlestown. They'll address connecting with diverse new Americans, understanding priorities, and involving them in the project. The scenario involves navigating competing interests, language barriers, and minimal prior community involvement. Attendees will develop a six-month strategy to build relationships, address urban heat issues, and connect residents to MyRWA and the Mystic River. The workshop emphasizes practical, culturally sensitive approaches to community engagement in environmental justice contexts.



Integrating Spatial Justice in Practice

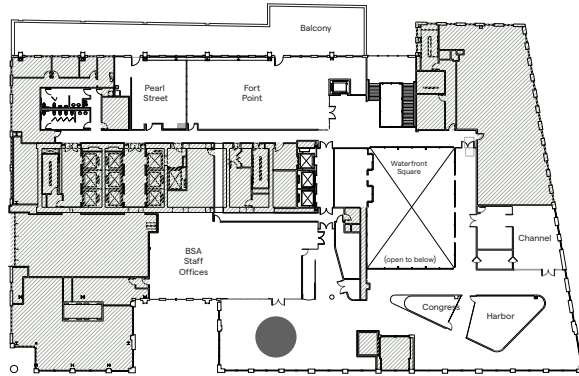
This workshop explores integrating spatial justice into professional practice, using Payette's Spatial Equity Research Group as a case study. Participants will learn how to launch and maintain spatial justice-focused initiatives within their firms, balancing leadership with listening. The session addresses challenges young professionals face when implementing new ideas, including work-life balance and career development. Through interactive activities and small group discussions, attendees will develop actionable plans for spatial justice practices in their own contexts.

Day 1

Closing Reflections

4:45pm to 5:15pm

Salt Gallery



Towards Anti-Oppressive Collaborative Practices

Rebecca Riccio, Khaled and Olfat Juffali Director of the Social Impact Lab
Northeastern University

The closing session of Day 1 introduces the **Principles of Anti-Oppressive Community Engagement**, examining their relevance to spatial justice and design practices through lenses of power and positionality. Attendees will explore key principles: honoring communities' autonomy, respecting history and expertise, building authentic relationships, and accountability. Participants will reflect on how well-intentioned actions can cause unintended harm, identifying challenges and opportunities in their own practices. Through interactive exercises, individuals will commit to specific anti-oppressive actions. These principles will inform Day 2's site visits and design charrette, fostering a collective commitment to reimagining spatial justice practices.



Rebecca Riccio is the Director of the Social Impact Lab at Northeastern University. Her teaching and research centers the use of experiential learning to cultivate systems thinking, ethical reasoning, and self-authorship among those who aspire to engage in social change. She is deeply engaged with promoting ethical community engaged teaching and learning, serving as a member of Northeastern's Racial Justice Initiative leadership team, as an Ashoka U Change Leader, and the faculty advisor to the Northeastern Honors Program social activism learning living community. Rebecca co authored the Principles of Anti-Oppressive Community Engagement.

Hosted by:

MASS.

**Designing
Just
Futures**

Welcome Reception

Snacks & Refreshments

5:30pm to 7:30pm

MASS Design Group

1 Chandler Street, Boston, MA

At the conclusion of the first day of the Designing Just Futures Summit, **MASS Design Group** will host a reception at their offices.

Continue the day's conversations and make new connections over light refreshments from Dorchester's **Fresh Food Generation**.

Guests are invited to view the **Gun Violence Memorial Project** (right), a poignant installation currently on display, which honors victims of gun violence through personal mementos, reflecting MASS's commitment to using design to inspire dialogue on healing and justice.



Thank You

To our partners and
sponsors for supporting
Designing Just Futures

Partners

**Sasaki
Foundation**

**gateway
office** BOSTON
ARCHITECTURAL
COLLEGE

Community Champions



CANNONDESIGN

Perkins&Will

studio **g** architects

STUDIO ENÉE

FHLBank Boston
Strategic partnerships. Reliable funding.

**Additional thanks
for the following
in-kind
contributions**

Lunch provided by:

Amba
Cambridge Street
Hospitality Group



CSHG

Day 2 Overview

Designing
Just
Futures

Spatial Justice on the Ground

Site visits*

9:30am to 12:00pm

East Boston: Eastie Farm ●

Roxbury: Reclaim Roxbury ●

Chinatown: Chinatown Community Land Trust ●

Revere: Shirley Ave, Mass Development TDI ●

* Site visit location is determined by your **Spatial Justice in Practice** session on Day 1
See your site visit guide for more details.

In partnership with:
Sasaki Foundation

Design Charrette

1:30pm to 4:30pm

Salt Gallery

In partnership with:
Boston Architectural College Gateway Office

Action Planning and Commitments

4:45pm to 5:15pm

Salt Gallery

BSA